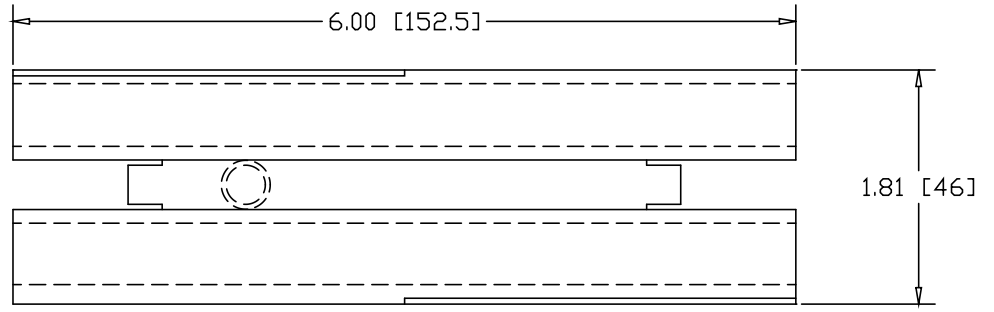
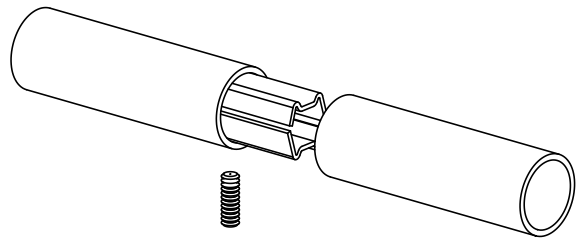
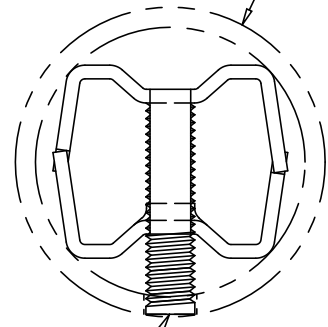


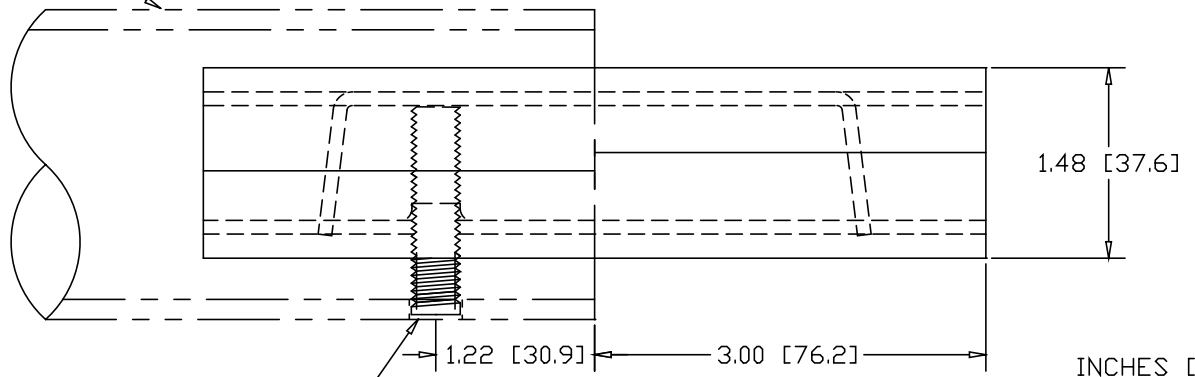
REVISIONS			
REV	DESCRIPTION	DATE	APPROVED



2" SCHEDULE 40 PIPE
(2.38 DIA. X .154 WALL)




3/8-16 SOCKET HEAD
SET-SCREW X 1-5/8" LONG



DRILL ϕ .406 HOLE
1.22" IN FROM END

INCHES [MILLIMETERS]

ALTERNATE MATERIAL	PART NO.
12 GA. HOT DIP GALVANIZED	G3334-6
12 GA. STEEL ZINC PLATED	PL3334-6
.090 (3003) ALUMINUM ASTM B209	3336
.090 (304) STAINLESS STEEL ASTM A240	3337

PART NAME		2" SCH40 PIPE SINGLE-LOCK SPLICE-LOCK 6" LONG					
MATERIAL		12 GA. HRP&D STEEL ASTM A569					
DATE	9/25/97	 R & B WAGNER, INC.					
DRAWN BY	RJF						
FINISH	MILL						
SIZE	A	WEIGHT	1.03 LBS	PART NUMBER	3334-6	REV	