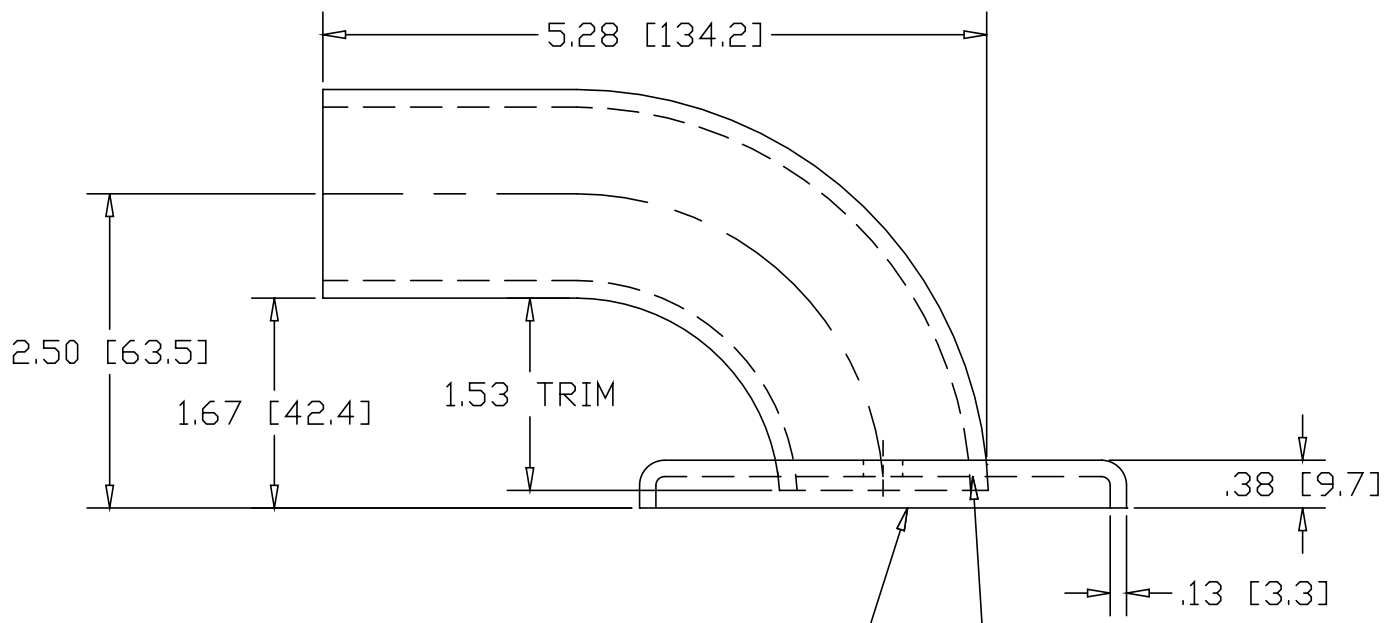
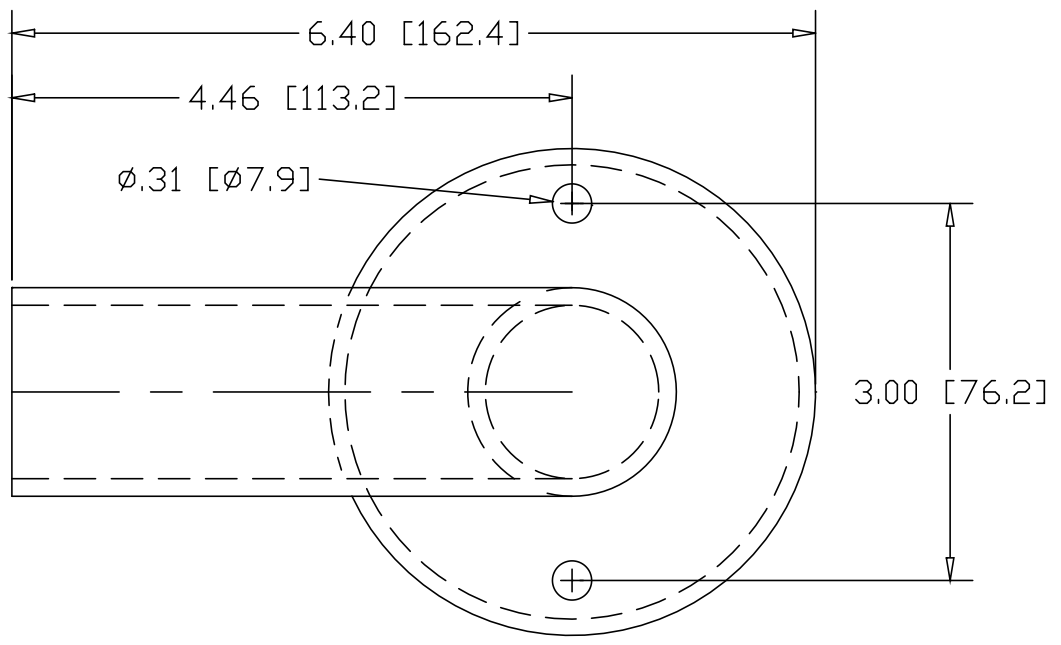


REV  
SH  
1109-2  
DWG NO

REVISIONS			
REV	DESCRIPTION	DATE	APPROVED



HEAVY FLUSH BASE  
PIPE FLANGE #2567  
WELD ALL AROUND

INCHES [MILLIMETERS]

PART NAME		1-1/4" PIPE SIZE X 2.50"CL WALL RETURN W/2 HOLES		
MATERIAL		6063 ALUMINUM		
DATE	10/01/02		THE WAGNER COMPANIES R & B WAGNER, INC. AND J. G. BRAUN CO.	
DRAWN BY	JAH			
FINISH	MILL			
SIZE	A	WEIGHT	PART NUMBER	1109-2
			REV	