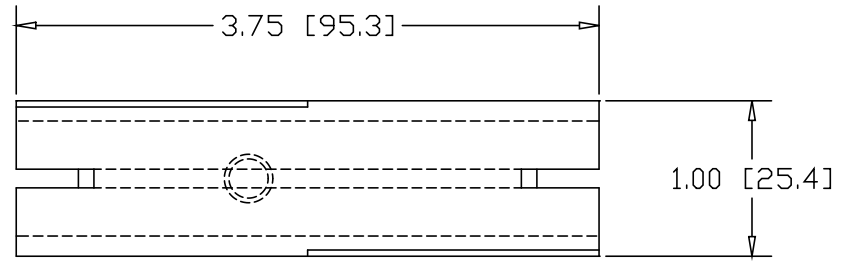
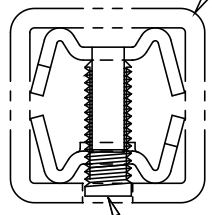


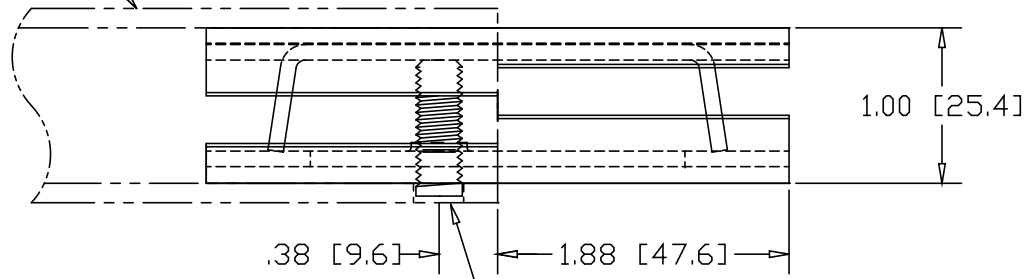
REVISIONS			
REV	DESCRIPTION	DATE	APPROVED



1.25" SQ. X .125W TUBE




5/16-18 SOCKET HEAD SET-SCREW



DRILL  $\phi$ .34[8.6] HOLE  
.38[9.6] IN FROM END  
FOR SET-SCREW

INCHES [MILLIMETERS]

ALTERNATE MATERIAL	PART NO.
12 GA. STEEL HOT DIP GALVANIZED	G3340
12 GA. STEEL ZINC PLATED	PL3340
.090 (3003) ALUMINUM ASTM B209	3343
.090 (304) STAINLESS STEEL ASTM A240	3346

PART NAME		1.25" SQ. X .125W TUBE SINGLE-LOCK SPLICE-LOCK					
MATERIAL		12 GA. HRP&D STEEL ASTM A569					
DATE	9/24/01	 <b>R &amp; B WAGNER, INC.</b>					
DRAWN BY	JAH						
FINISH	MILL						
SIZE	A	WEIGHT	.26 LBS	PART NUMBER	3340	REV	