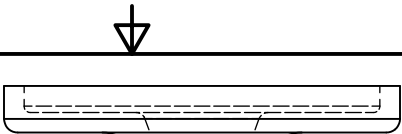



- A -  0.060



Ø.28 C'SINK Ø.53 X .82'
FROM FAR SIDE
TYP (2) PLACES

R.44 REF

 0.030 A

1.00 REF

1.50 ± 0.06

2.23 REF

.50

.44 REF

R.75

R.09 REF

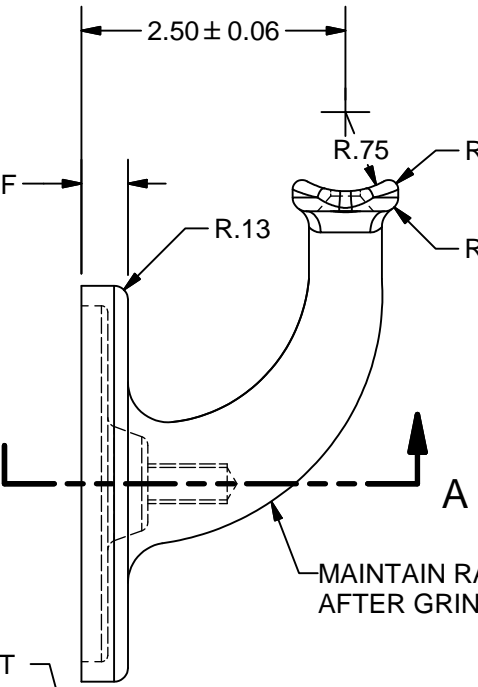
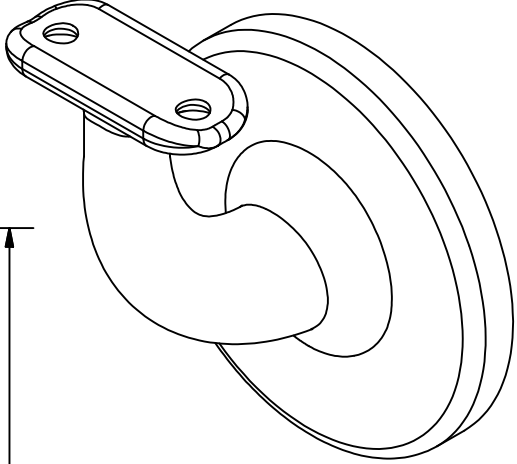
R.13

R.13 REF

.19

2.77 ± 0.06

4.75 REF




A

MAINTAIN RADIUS
AFTER GRINDING

CAVITY MUST FIT
Ø3.19 X .188 GAGE

3/8-16 TAP X 1.38 DEEP

 0.060 A

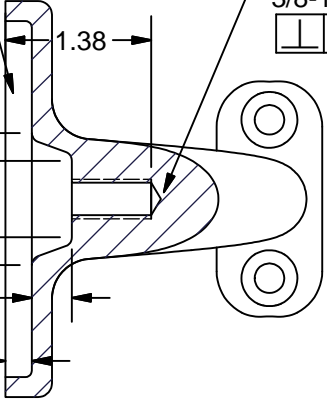
3.37

1.25 REF

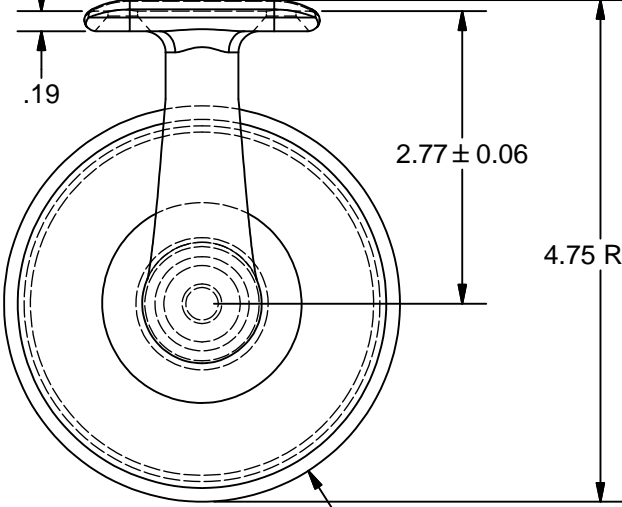
.72

.38


.25 REF



SECTION A-A



Ø3.75 REF

A	MATL SPEC WAS MALLEABLE	2/2/2016	RJF
REV	DESCRIPTION	DATE	APPROVED
REVISION HISTORY			
NAME	2-1/2" CAST HANDRAIL BRACKET WITH UNIVERSAL SADDLE		
MATERIAL	DUCTILE IRON ASTM A536 65-45-12		
DATE	7/27/2006	COLLABORATIVE METAL WORKS	
DRAWN	RJF		
FINISH	SHOT BLASTED	SIZE	REV
		A	A
	WEIGHT	PART NUMBER	
	1.353 lbs	1701-2	

