

2



1

REVISION HISTORY

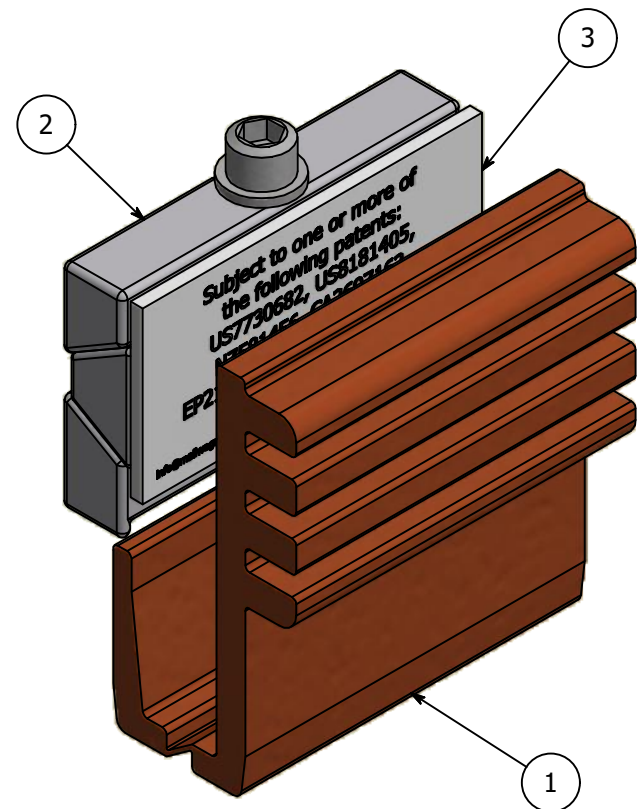
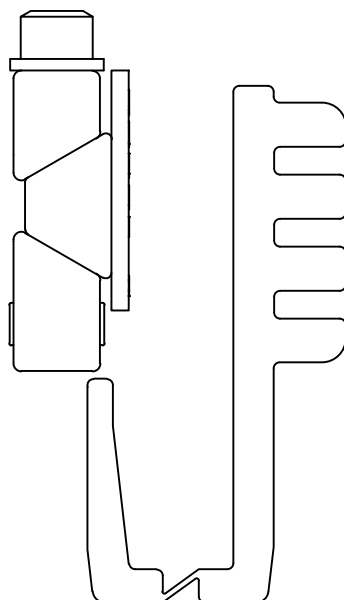
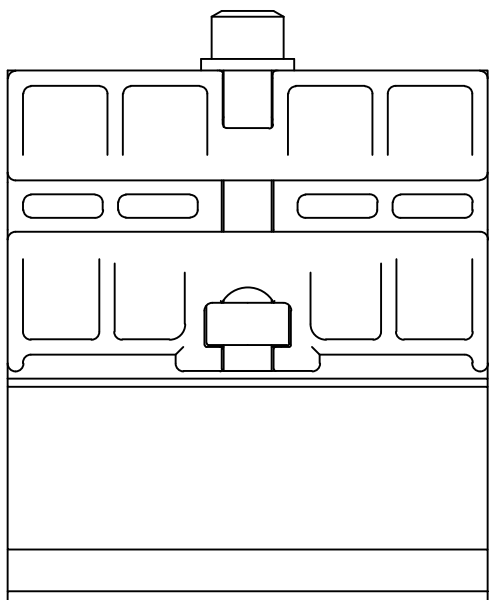
REV	DESCRIPTION	DATE
2	Changed red pad to white	11/20/2017
3	PGISO.035 Qty. 2 WAS PGISO.125 Qty. 1	12/20/2018
4	PGISO.090 Qty. 1 WAS PGISO.035 Qty. 2	2/1/2019
5	Added Sheet 2, mechanism details	3/18/2019

PARTS LIST

ITEM	QTY	PART NUMBER	DESCRIPTION
1	1	PGISO60	Brown Isolator, Plastic, Used with Panel Grip, 1/2" Glass
2	1	N/A	Panel Grip Assembly, see sheet 2
3	1	PGISO.090	Isolator HDPE White/PSA 3M 468MP One Side .090 Inch X 1.25 Inch X 2.5 Inch Printed


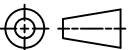
B

B



A

A

TOLERANCE X.X..... = ± .060 X.XX..... = ± .030 X.XXX..... = ± .010 XX°..... = ± 1° UNLESS OTHERWISE NOTED	CUT LENGTH:	FINISH:	DESCRIPTION: PanelGrip 2 for 1/2" Glass, Dry Mount Mechanism, w/ Brown Isolator and Red Pad		
	DEVELOPED LENGTH:	WEIGHT:	DATE:	REV:	 COLLABORATIVE METAL WORKS
	TOOL NUMBER:		3/18/2019	5	
				DRAWN BY: K. Bauserman	PART NUMBER: PG2460

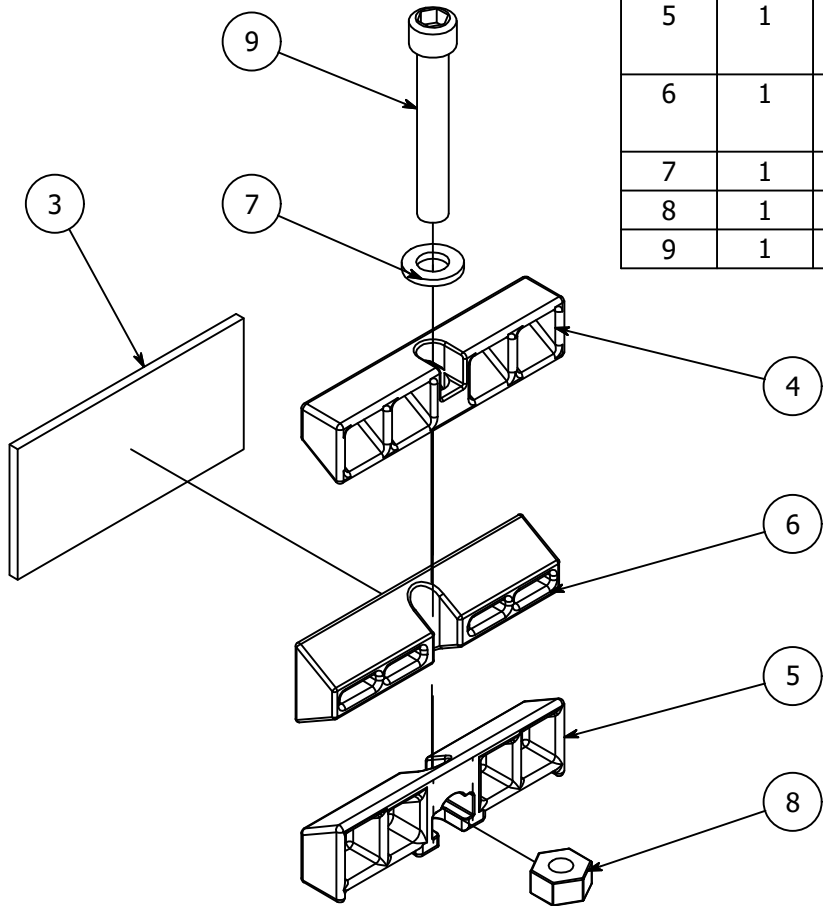
2



1

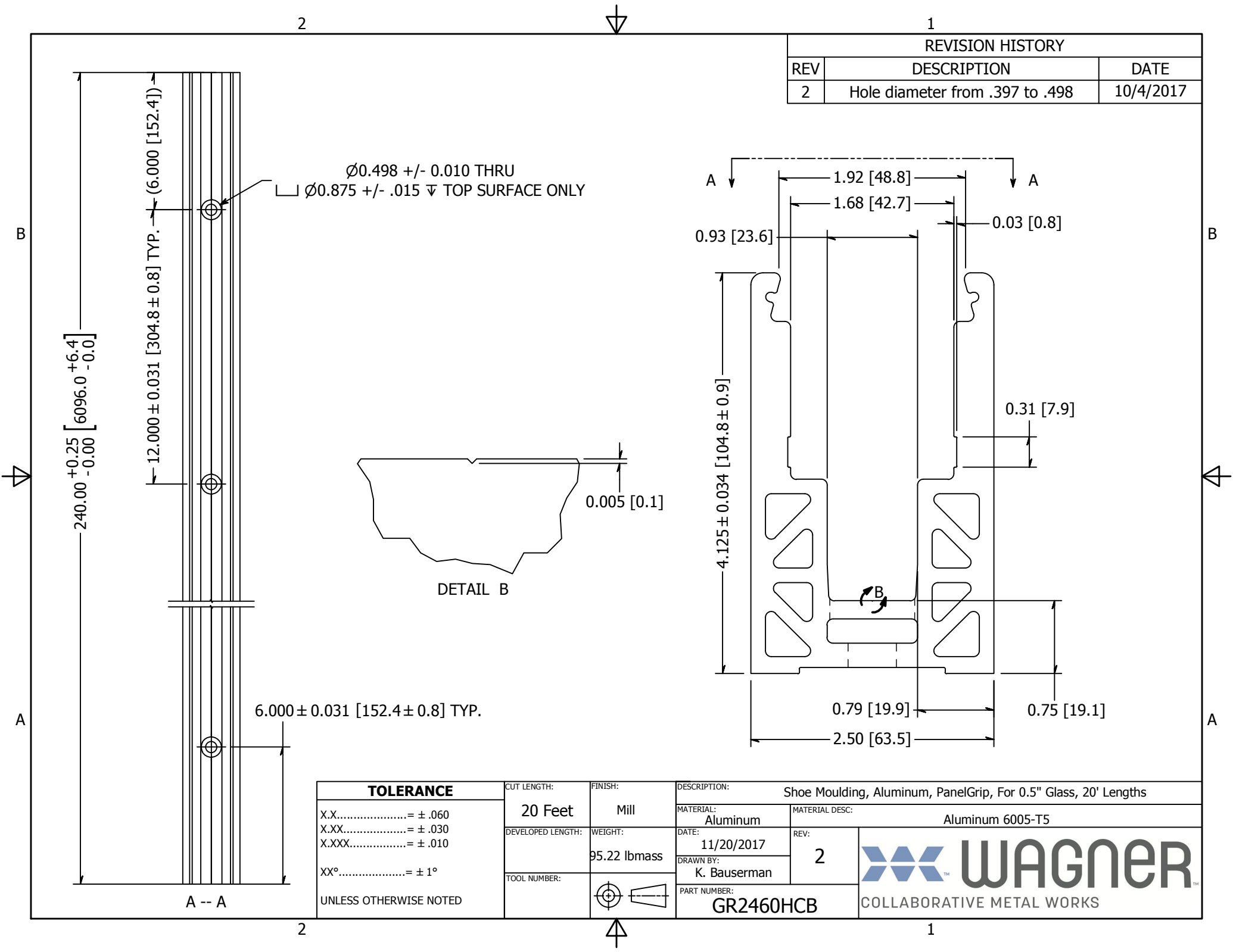
PANEL GRIP MECHANISM ASSEMBLY

PARTS LIST			
ITEM	QTY	PART NUMBER	DESCRIPTION
3	1	PGISO.090	Isolator HDPE White/PSA 3M 468MP One Side .090 Inch X 1.25 Inch X 2.5 Inch Printed
4	1	PG2T	PanelGrip, Zinc Aluminum, Cast, Top Block, .450" Thick, .57" High, 2.50" Long
5	1	PG2B	PanelGrip, Zinc Aluminum, Cast, Bottom Block, .450" Thick, .72" High, 2.50" Long
6	1	PG2C	PanelGrip, Zinc Aluminum, Cast, Center Block, .450" Thick, .76" High, 2.50" Long
7	1	PG2LW	Washer Lock, 1/4-20, Stainless Steel
8	1	PG2NUT	Nut, Stainless Steel, 1/4-20 FHN
9	1	SHC3N2520-0163	SCREW SS 1/4-20 X .50 SOCKET HEAD CAP



TOLERANCE X.X.....= ± .060 X.XX.....= ± .030 X.XXX.....= ± .010 XX°.....= ± 1° UNLESS OTHERWISE NOTED	CUT LENGTH:	FINISH:	DESCRIPTION: PanelGrip 2 for 1/2" Glass, Dry Mount Mechanism, w/ Brown Isolator and Red Pad	
	DEVELOPED LENGTH:	WEIGHT:	DATE:	REV:
	TOOL NUMBER:		DRAWN BY:	5
			PART NUMBER:	





REVISION HISTORY		
REV	DESCRIPTION	DATE
2	Hole diameter from .397 to .498	10/4/2017

TOLERANCE X.X..... = ± .060 X.XX..... = ± .030 X.XXX..... = ± .010 XX°..... = ± 1° UNLESS OTHERWISE NOTED	CUT LENGTH:	FINISH:	DESCRIPTION:	
	20 Feet	Mill	Shoe Moulding, Aluminum, PanelGrip, For 0.5" Glass, 20' Lengths	
	DEVELOPED LENGTH:	WEIGHT:	MATERIAL:	MATERIAL DESC:
		95.22 lbmass	Aluminum	Aluminum 6005-T5
	TOOL NUMBER:		DATE:	REV:
			11/20/2017	2
			DRAWN BY:	
			K. Bauserman	
			PART NUMBER:	
			GR2460HCB	

