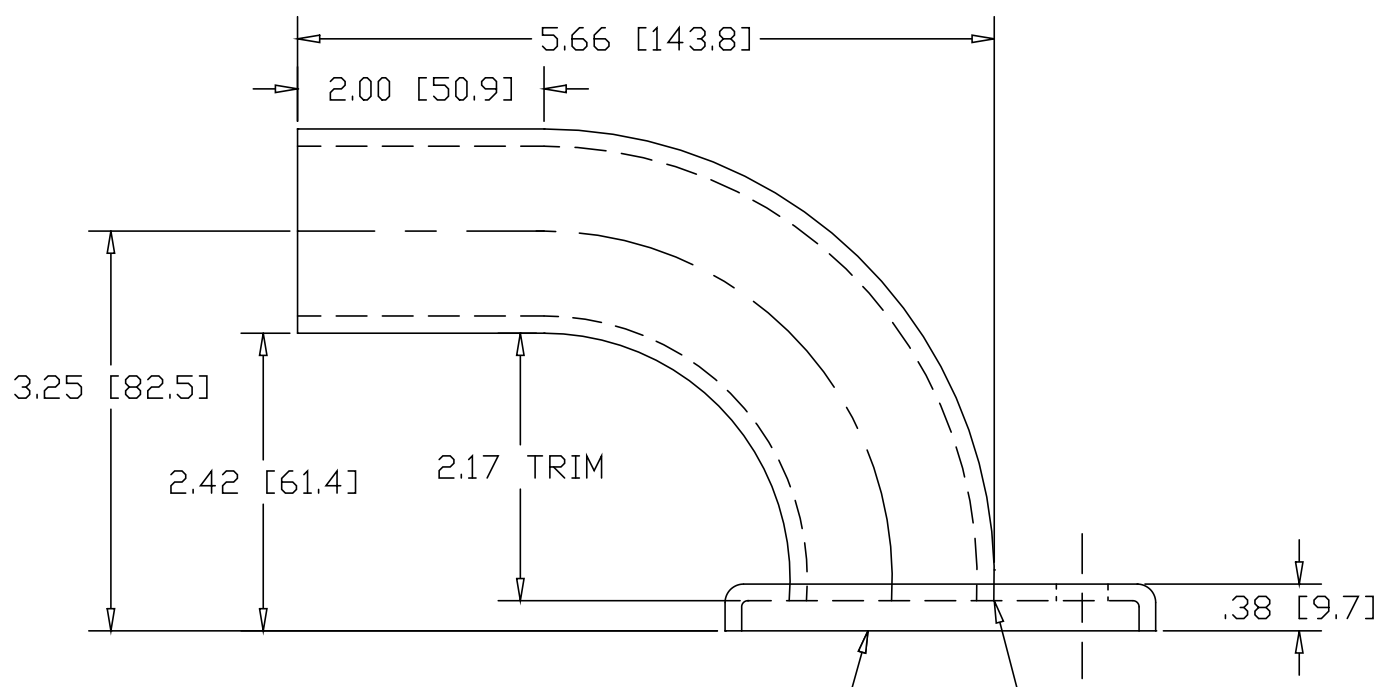
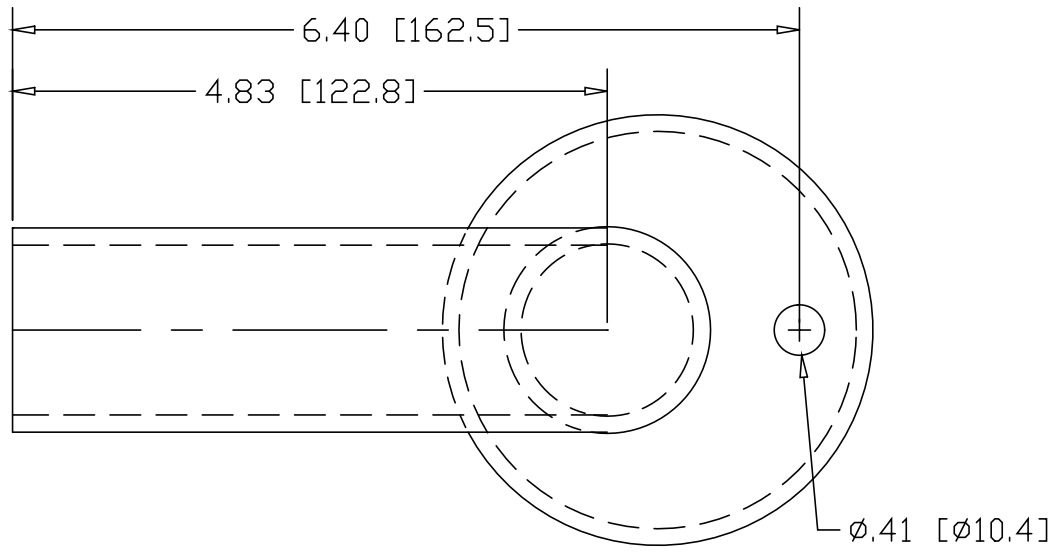


REV  
SH  
1162-1  
DWG NO

REVISIONS			
REV	DESCRIPTION	DATE	APPROVED



HEAVY FLUSH BASE  
FLANGE #2606R

.50" LONG WELD  
(3) PLACES AT 120°

INCHES [MILLIMETERS]

PART NAME		1-1/4" PIPE SIZE X 3.25"CL WALL RETURN W/1 HOLE		
MATERIAL		STAINLESS STEEL ASTM-A312		
DATE	1/10/07		<b>THE WAGNER COMPANIES</b> R & B WAGNER, INC. AND J. G. BRAUN CO.	
DRAWN BY	RDC			
FINISH	#4 SATIN			
SIZE	A	WEIGHT	PART NUMBER	1162-1
			REV	