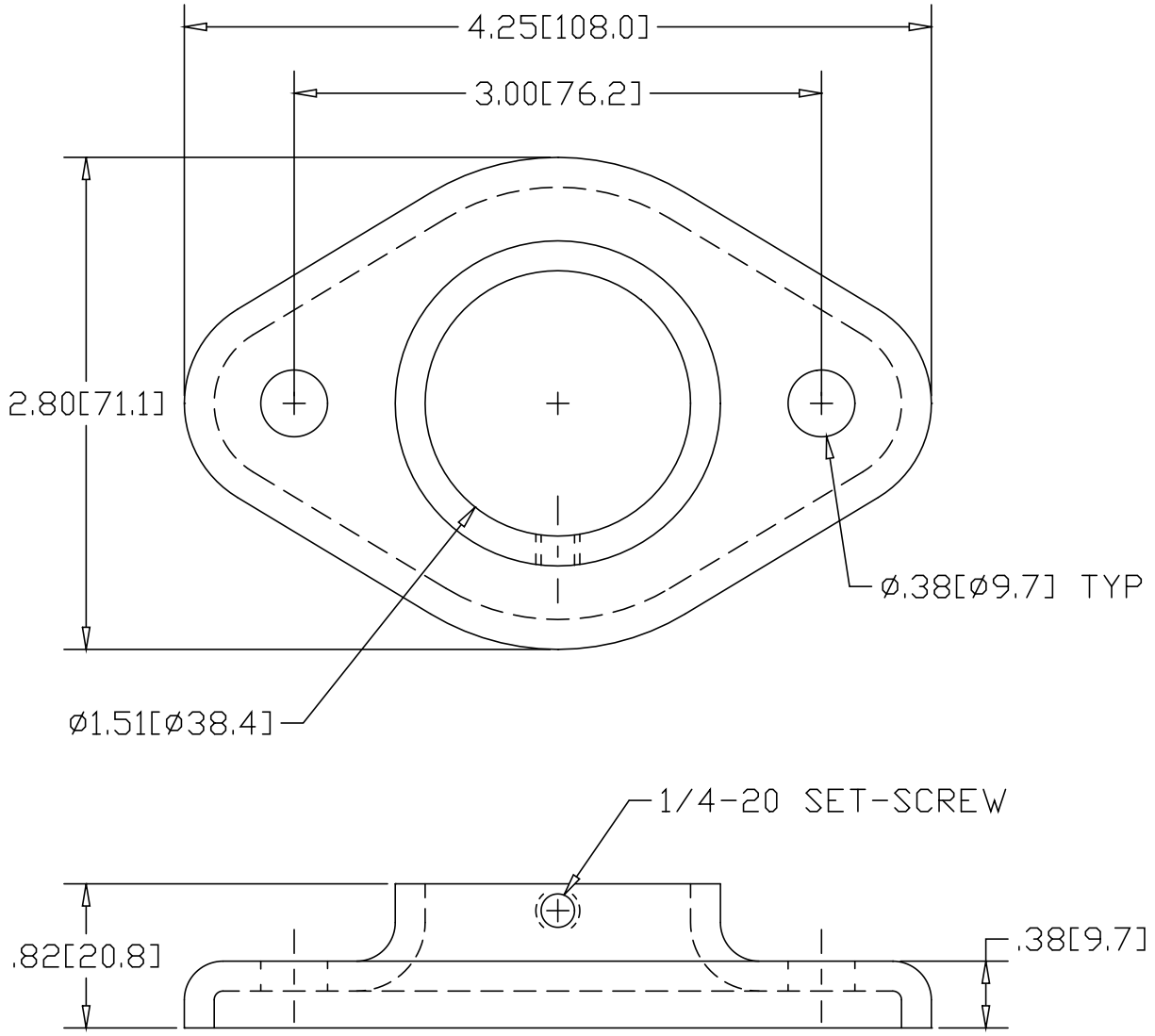


REV
SH
DWG NO 4918T

REVISIONS			
REV	DESCRIPTION	DATE	APPROVED



INCHES [MILLIMETERS]

ALTERNATE MATERIAL	PART NUMBER
.190 (3003) ALUMINUM ASTM B209	4948T
7 GA. (304) STAINLESS STEEL ASTM A240	4978T

PART NAME 1-1/2" O.D. TUBE TAPERED HEAVY BASE FLANGE W/2 HOLES & SET-SCREW			
MATERIAL 7 GA. HRP&D STEEL ASTM A569			
DATE 5/22/95			
DRAWN BY RJF			
FINISH MILL	SIZE A	WEIGHT .41 LBS	PART NUMBER 4918T
			REV