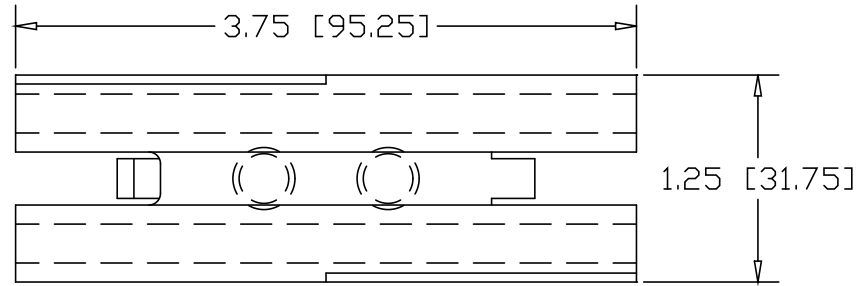
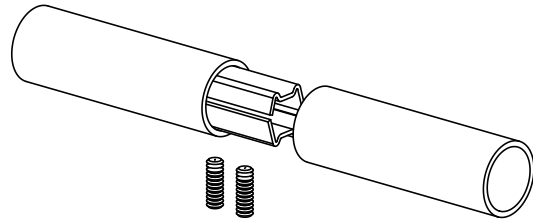
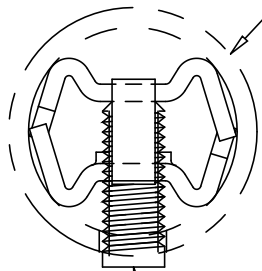


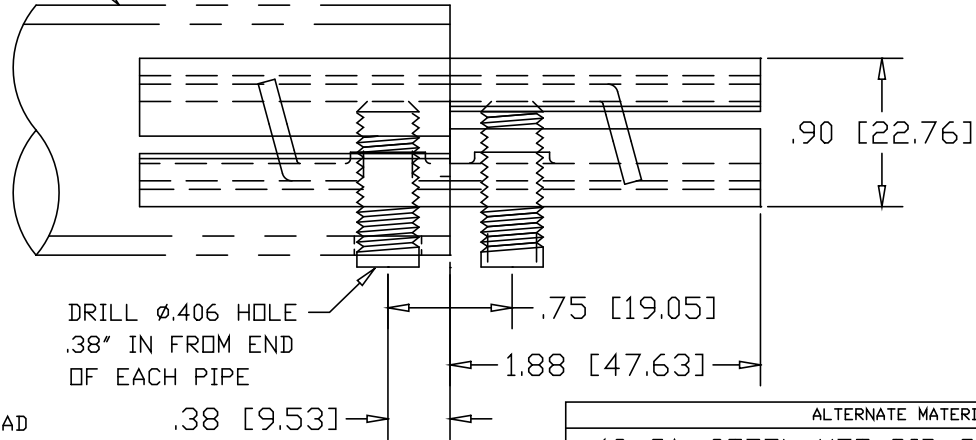
| REVISIONS | | | |
|-----------|-------------|------|----------|
| REV | DESCRIPTION | DATE | APPROVED |



1.50" OD X .125W TUBING




3/8-16 SOCKET HEAD SET-SCREW X 1" (2) PLACES



DRILL ϕ .406 HOLE .38" IN FROM END OF EACH PIPE

| ALTERNATE MATERIAL | PART NO. |
|--------------------------------------|----------|
| 12 GA. STEEL HOT DIP GALVANIZED | G3366-8 |
| 12 GA. STEEL ZINC PLATED | PL3366-8 |
| .090 (3003) ALUMINUM ASTM B209 | 3367-8 |
| .090 (304) STAINLESS STEEL ASTM A240 | 3369-8 |

| | | | | | | | |
|---|---------|---|---------|-------------|--------|-----|--|
| PART NAME 1.50" O.D. X .125W TUBE DOUBLE-LOCK SPLICE-LOCK | | | | | | | |
| MATERIAL 12 GA. HRP&D STEEL ASTM A569 | | | | | | | |
| DATE | 9/20/01 |  R & B WAGNER, INC. | | | | | |
| DRAWN BY | JAH | | | | | | |
| FINISH | MILL | | | | | | |
| SIZE | A | WEIGHT | .38 LBS | PART NUMBER | 3366-8 | REV | |