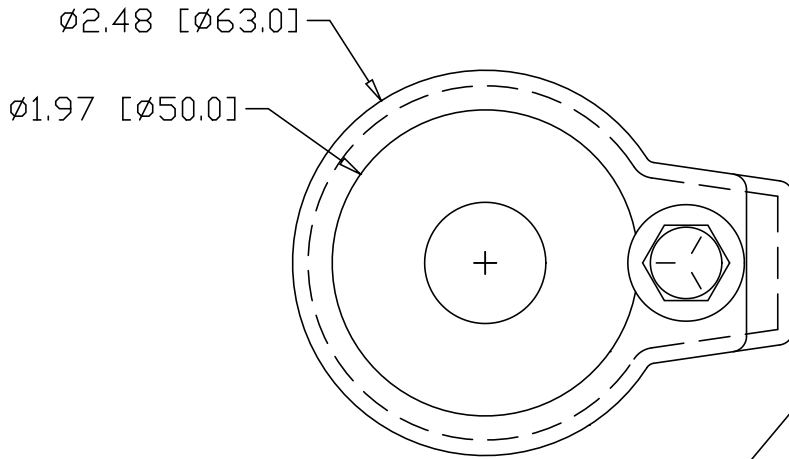


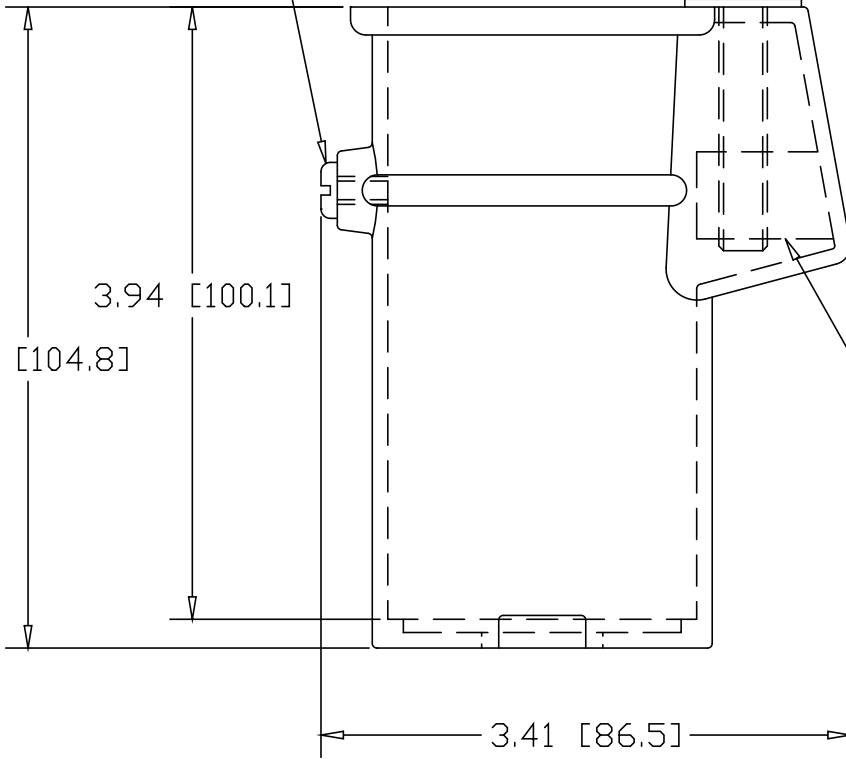
REV
SH
DWG NO PS-4019

REVISIONS			
REV	DESCRIPTION	DATE	APPROVED



BRASS ELECTRICAL GROUND SCREW


5/16" STAINLESS STEEL BOLT W/ FLAT WASHER



BRASS WEDGE BLOCK

INCHES [MILLIMETERS]

ALTERNATE MATERIAL	PART NUMBER
CAST BRASS	PS-4019B

PART NAME		1-1/2" PIPE SIZE X 4" DEEP PERMA-SOCKET				
MATERIAL		CAST ALUMINUM				
DATE	8/31/94	 THE WAGNER COMPANIES R & B WAGNER, INC. AND J. G. BRAUN CO.	PART NUMBER			
DRAWN BY	RJF					
FINISH	MILL					
SIZE	A	WEIGHT	.62 LBS	PART NUMBER	PS-4019	REV