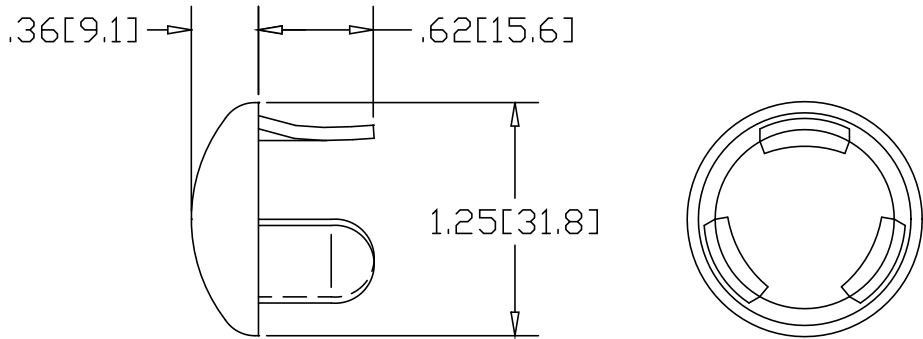



REV
SH
DWG NO 3233D.5

| REVISIONS | | | |
|-----------|-------------|------|----------|
| REV | DESCRIPTION | DATE | APPROVED |



INCHES [MILLIMETERS]

| ALTERNATE MATERIAL | PART NUMBER |
|--|-------------|
| .063 (3003) ALUMINUM ASTM B-209 | 3234D.5 |
| 16 GA. (304) STAINLESS STEEL ASTM A240 | 3263D.5 |

| | | | |
|---|---|---|-----|
| PART NAME 1.25" O.D. X .065W TYPE "H" OVAL DRIVE-ON END CAP | | | |
| MATERIAL 16 GA. HRP&O STEEL ASTM A-569 | | | |
| DATE 7/10/96 |  | THE WAGNER COMPANIES R & B WAGNER, INC. AND J. G. BRAUN CO. | |
| DRAWN BY RJF | | | |
| FINISH MILL SEE NOTE | | | |
| SIZE A | WEIGHT .05 LBS | PART NUMBER 3233D.5 | REV |

NOTE: ALUMINUM AND STAINLESS CAPS HAVE #4 SATIN FINISH.