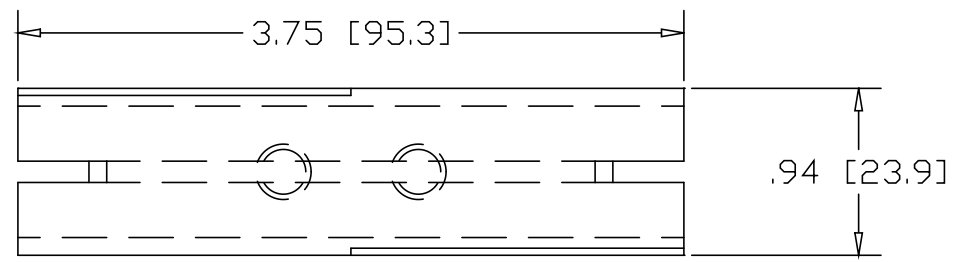
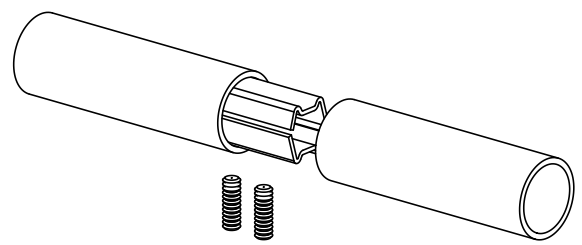
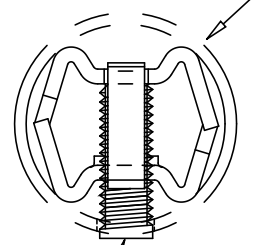


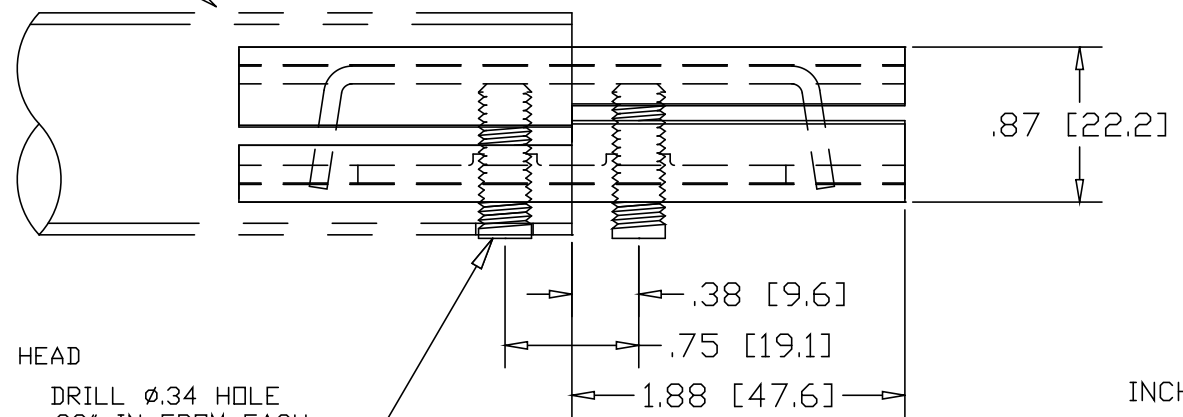
REVISIONS			
REV	DESCRIPTION	DATE	APPROVED



1.25" OD .065W TUBE




5/16-18 SOCKET HEAD SET-SCREW



DRILL ϕ .34 HOLE
.38" IN FROM EACH
END FOR SET-SCREW

INCHES [MILLIMETERS]

ALTERNATE MATERIAL	PART NO.
12 GA. STEEL HOT DIP GALVANIZED	G3374
12 GA. STEEL ZINC PLATED	PL3374
.090 (3003) ALUMINUM ASTM B209	3375
.090 (304) STAINLESS STEEL ASTM A240	3376

PART NAME		1.25" .065W TUBE DOUBLE-LOCK SPLICE-LOCK		
MATERIAL		12 GA. HRP&D STEEL ASTM A569		
DATE	9/20/01	 R & B WAGNER, INC.		
DRAWN BY	JAH			
FINISH	MILL			
SIZE	WEIGHT	PART NUMBER	REV	
A	.26 LBS	3374		