

2

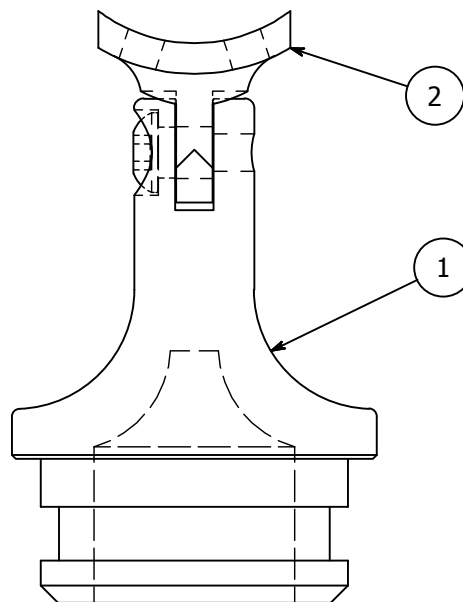
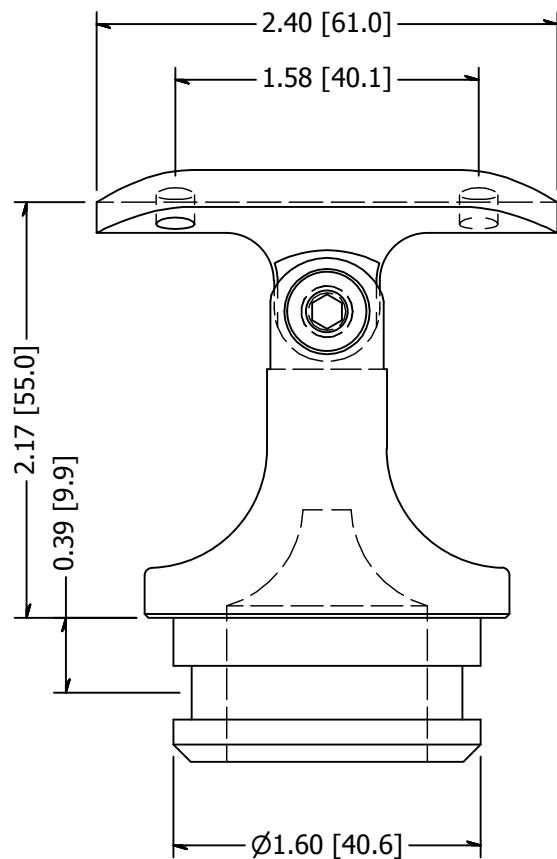


1

PARTS LIST

| ITEM | QTY | PART NUMBER | DESCRIPTION |
|------|-----|-------------|---|
| 1 | 1 | LU31904PTAA | Post Top, SS, Cast, For 1-1/2 in Schd 40 Pipe (1.90 Inch Dia W/ .145 in Wall) Pivot |
| 2 | 1 | SS507 | SADDLE, SWIVEL, CAST W/ HOLES |

B



B

A

| REVISION HISTORY | | |
|------------------|----------------------|-----------|
| REV | DESCRIPTION | DATE |
| 1 | Redesign of Post Top | 9/9/2013 |
| 2 | Remove Set Screw | 7/14/2014 |

A

| | | | |
|--|------------------------------|--|-----------|
| TOLERANCE UNLESS OTHERWISE NOTED, TOLERANCES TO CONFORM TO ES.03.011 | MATERIAL: Stainless Steel | DESCRIPTION: BRACKET SS POST ADJUST 1.90 #4 SC40 POST W/PIVOT SADDLE | |
| | FINISH: #4 | DATE: 10/10/2017 | REV: 2 |
| | WEIGHT: 0.69 lbmass | DRAWN BY: K. Turdo | |
| | | ITEM NUMBER: LU327 | |


WAGNER™ 10600 W Brown Deer Rd
 Milwaukee, WI 53224
 COLLABORATIVE METALWORKS <http://www.wagnercompanies.com/>

2



1