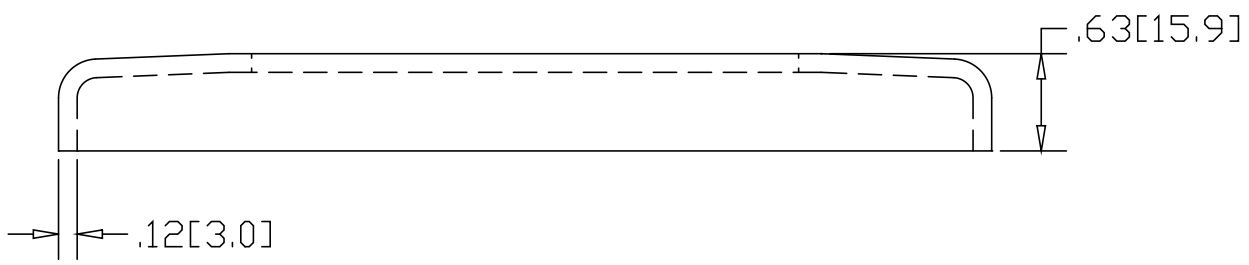
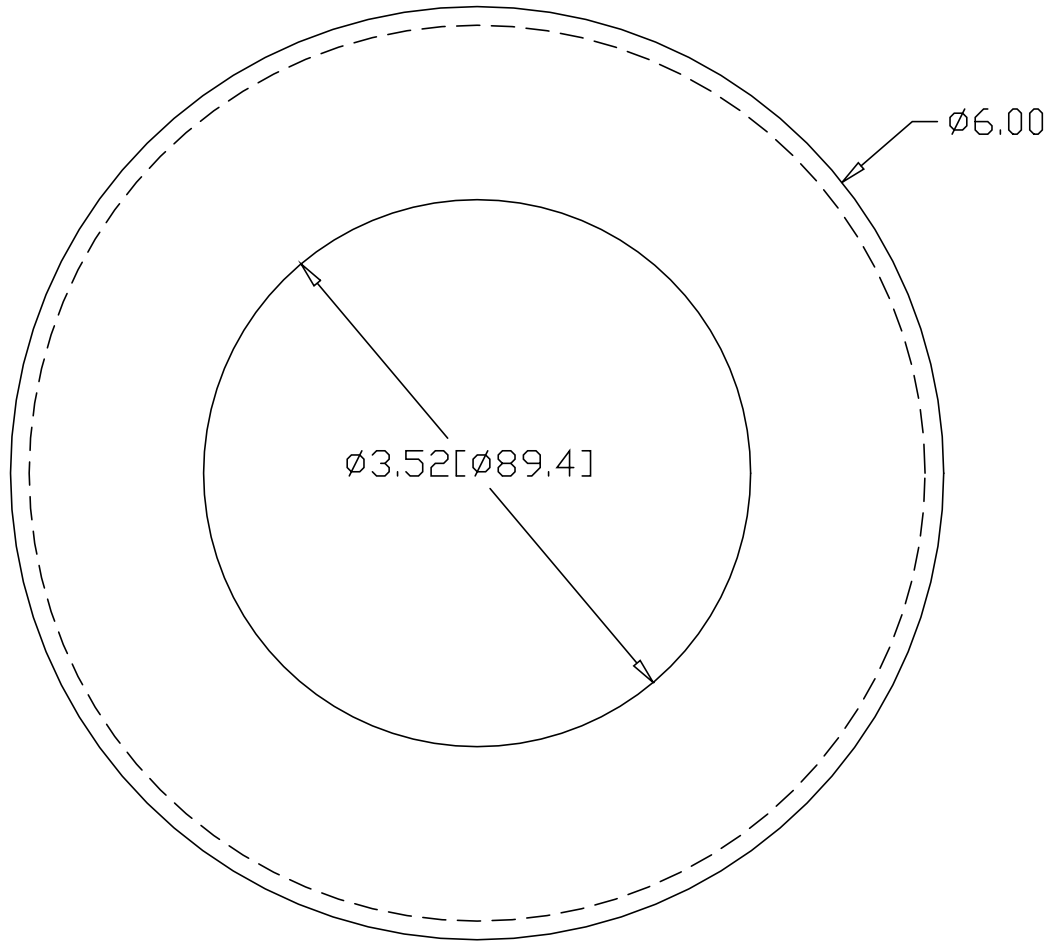



REV
SH
2546
DWG NO

REVISIONS			
REV	DESCRIPTION	DATE	APPROVED



INCHES [MILLIMETERS]

ALTERNATE MATERIAL	PART NUMBER
.125 (3003) ALUMINUM ASTM B209	2586
11 GA. STAINLESS STEEL ASTM A240	2626
.125 (280) MUNTZ METAL	BZ2546

PART NAME 3" PIPE (3.50"OD) HEAVY FLUSH BASE FLANGE, PLAIN			
MATERIAL 11 GA. HRP&D STEEL ASTM A569			
DATE 5/20/98	 R & B WAGNER, INC.		
DRAWN BY RJF			
FINISH MILL	SIZE A	WEIGHT 1.0 LBS	PART NUMBER 2546
			REV