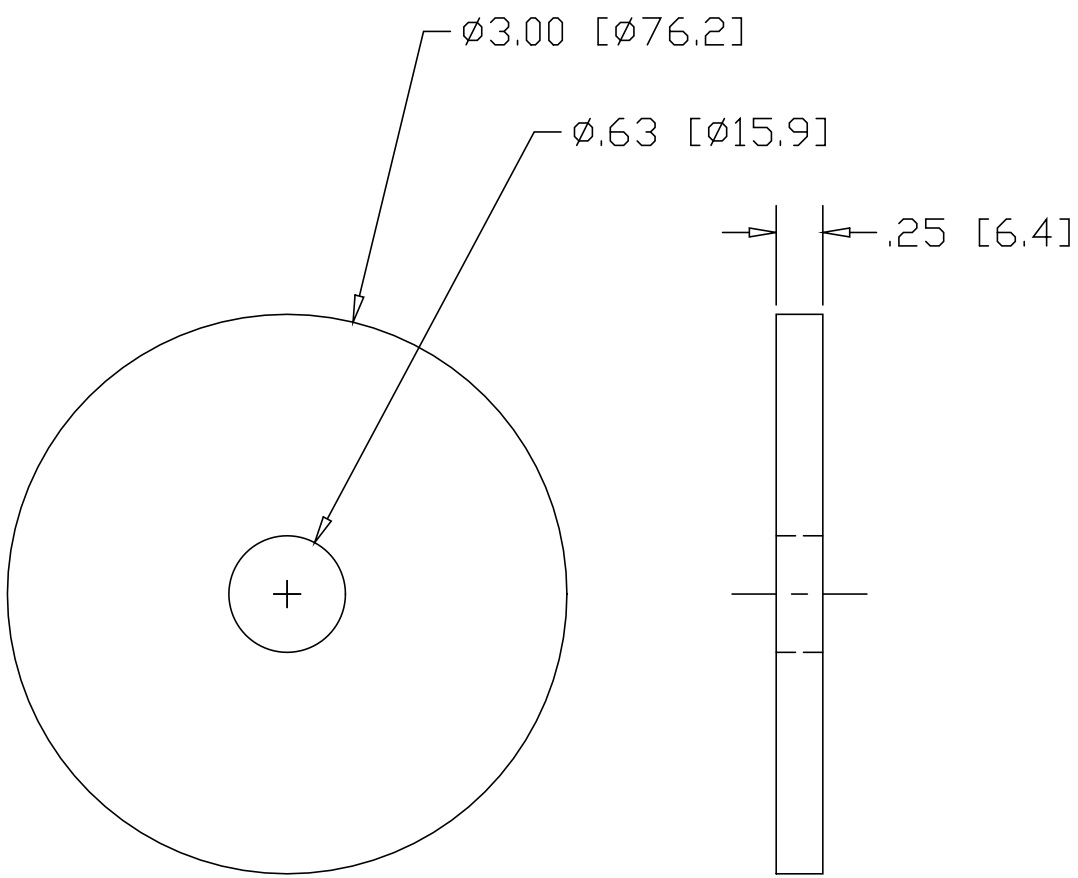



REV  
SH  
D143C6  
DWG NO

REVISIONS			
REV	DESCRIPTION	DATE	APPROVED



INCHES[MILLIMETERS]

ALTERNATE MATERIAL	PART NUMBER
.250 (3003) ALUMINUM ASTM B209	D144C6
.250 (304) STAINLESS STEEL ASTM A240	D145C6
.250 (260) BRASS ASTM B19,B36	D146C6
.250 (280) MUNTZ METAL	D146MC6

PART NAME		3.00" OD BASE DISK WITH .63 DIA CENTER HOLE	
MATERIAL		.250 HRP&D STEEL ASTM A569	
DATE	11/20/98	 <b>THE WAGNER COMPANIES</b> R & B WAGNER, INC. AND J. G. BRAUN CO.	
DRAWN BY	RJF		
FINISH	MILL		
SIZE	A	WEIGHT	.5 LBS
PART NUMBER		D143C6	
REV			