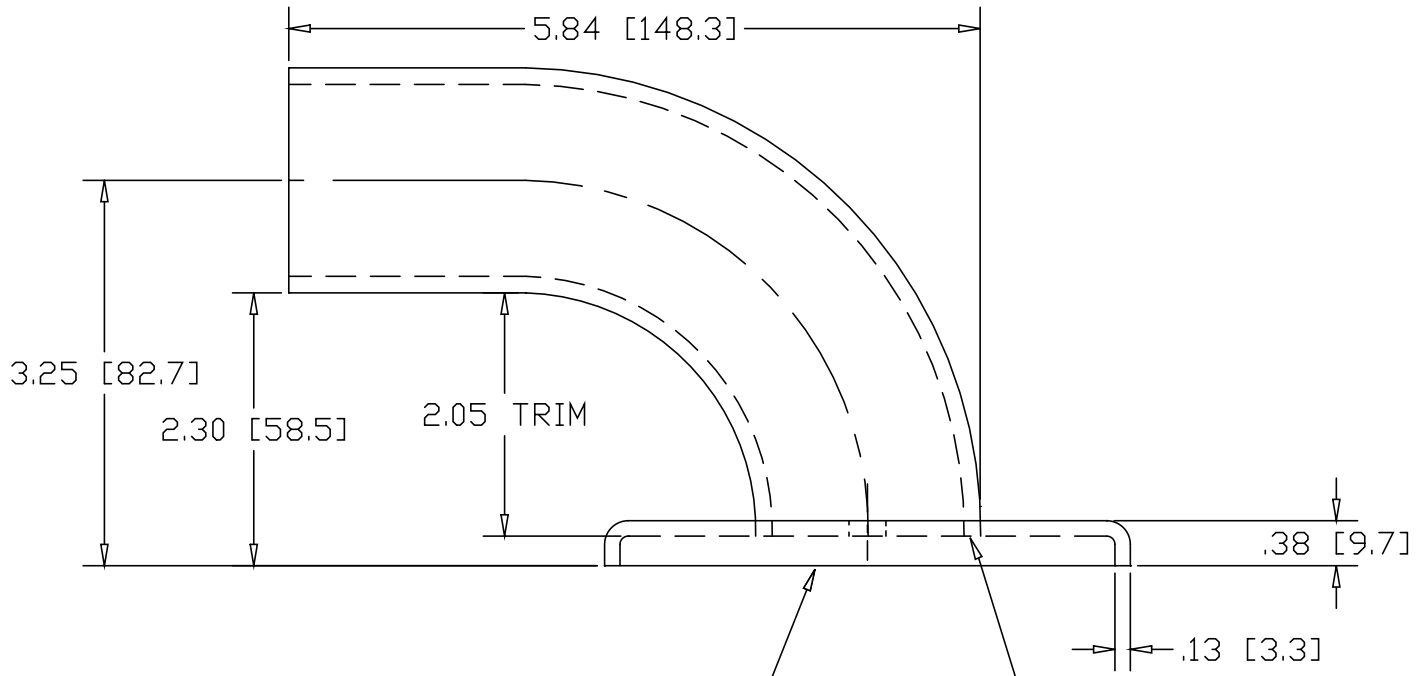
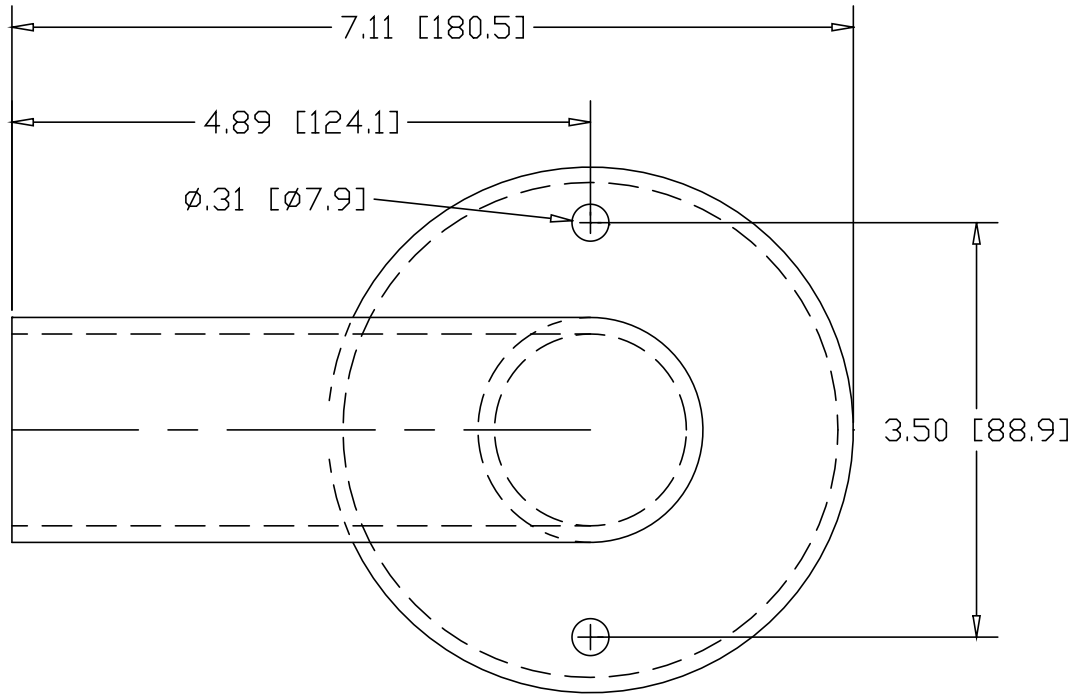


REV
SH
1165-2
DWG NO

REVISIONS			
REV	DESCRIPTION	DATE	APPROVED



HEAVY FLUSH BASE
PIPE FLANGE #2575

WELD ALL-AROUND

INCHES [MILLIMETERS]

PART NAME		1-1/2" PIPE SIZE X 3.25" CL WALL RETURN W/2 HOLES		
MATERIAL		6063 ALUMINUM		
DATE	1/10/07		THE WAGNER COMPANIES R & B WAGNER, INC. AND J. G. BRAUN CO.	
DRAWN BY	RDC			
FINISH	MILL			
SIZE	A	WEIGHT	PART NUMBER	1165-2
				REV