

2

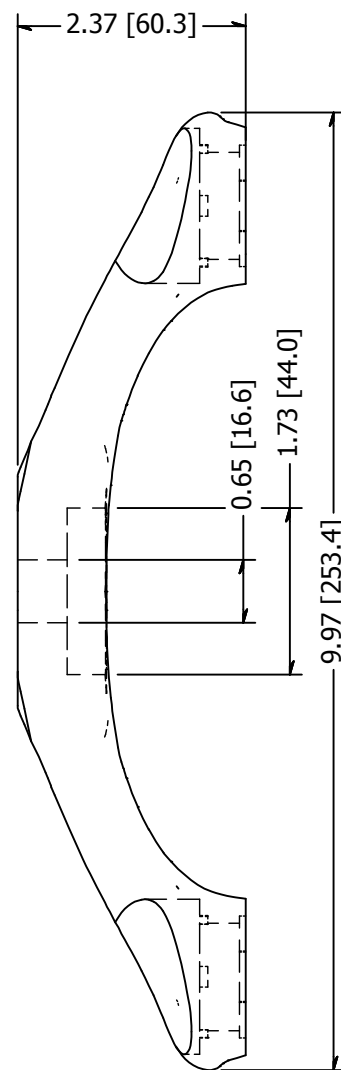
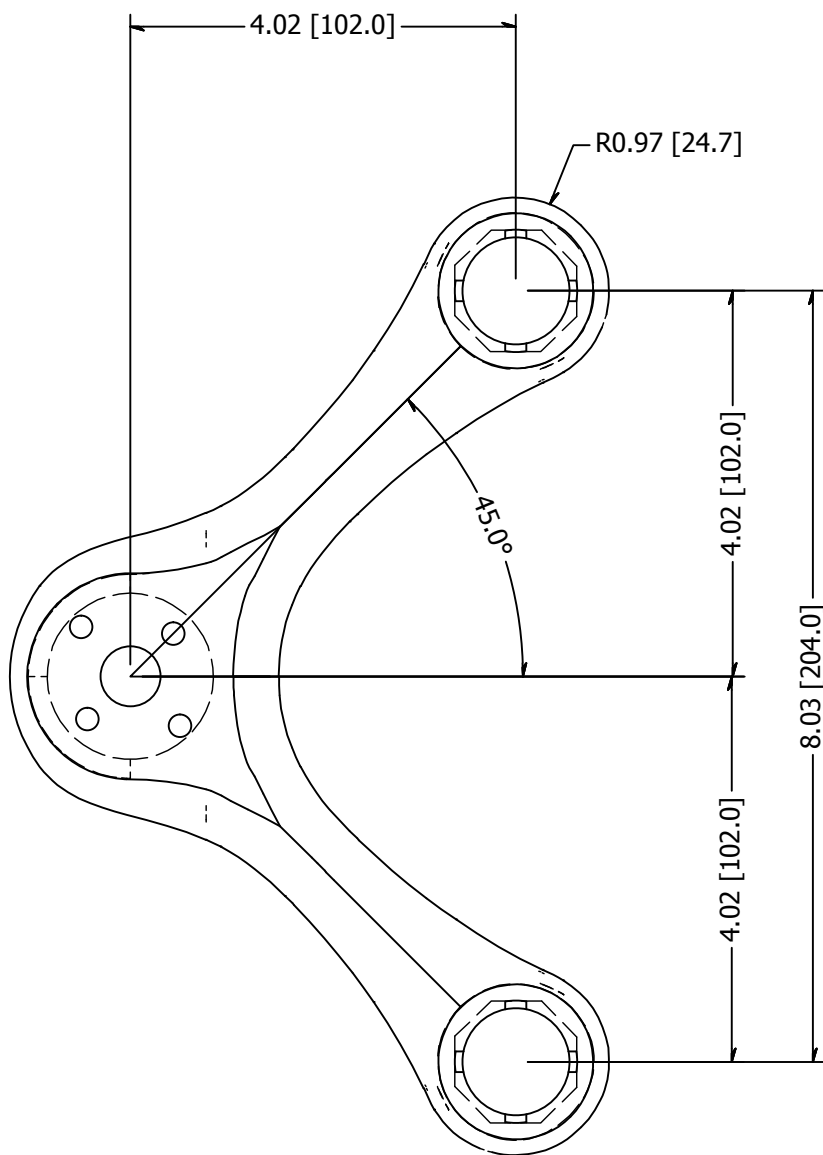


1



B

B



A

A

TOLERANCE UNLESS OTHERWISE NOTED, TOLERANCES TO CONFORM TO ES.03.011	CUT LENGTH:	FINISH:	DESCRIPTION: Spider, Stainless Steel, Sm Series, 200mm C/C 2 Point, 90 Degree, Brushed Satin Finish, Grade 316		
		#4	MATERIAL:	MATERIAL DESC:	
	DEVELOPED LENGTH:	WEIGHT:	Stainless Steel	316 Stainless Steel, Cast	
	TOOL NUMBER:	#4	DATE: 9/27/2017	REV: -	 10600 W Brown Deer Rd Milwaukee, WI 53224 COLLABORATIVE METALWORKS http://www.wagnercompanies.com/
		DRAWN BY: T. Kolbach			
			PART NUMBER: LXSM2090		

2



1