

2



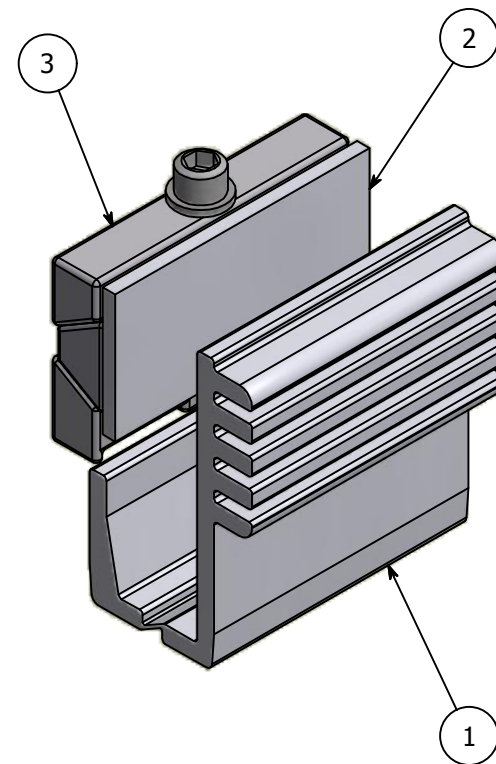
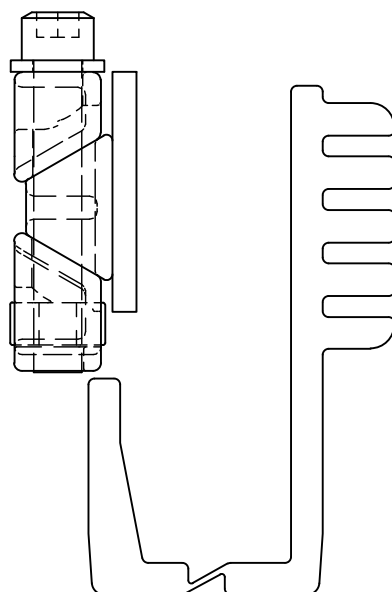
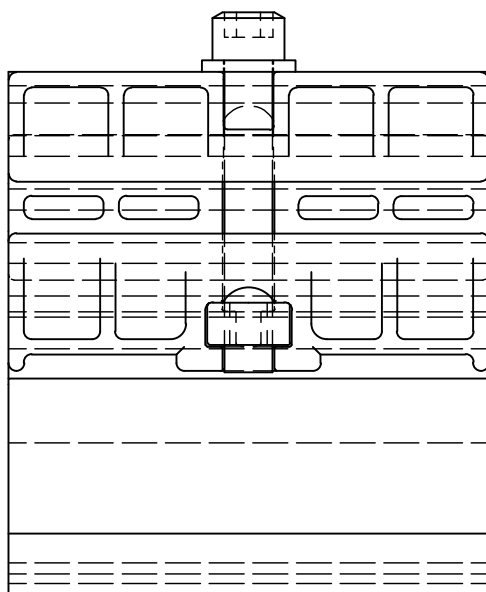
1

PARTS LIST

ITEM	QTY	PART NUMBER	DESCRIPTION
1	1	PGISO75	White Isolator, Plastic, Used with Panel Grip, 3/4" Glass
2	1	PGISO.125	White Pad, Used with Panel Grip, 3/4" Glass
3	1	N/A	Panel Grip Assembly

B

B



A

A

TOLERANCE X.X..... = ± .060 X.XX..... = ± .030 X.XXX..... = ± .010 XX°..... = ± 1° UNLESS OTHERWISE NOTED	CUT LENGTH:	FINISH:	DESCRIPTION: PanelGrip 2 for 3/4" Glass, Dry Mount Mechanism, with White Isolator and Black Pad		
	DEVELOPED LENGTH:	WEIGHT:	MATERIAL:	MATERIAL DESC:	1
	TOOL NUMBER:		DATE:	REV:	
			As Is	9/10/2015	1
		N/A	DRAWN BY:	PG2475S	
			K. Bauserman	WAGNER	
			PART NUMBER:	COLLABORATIVE METAL WORKS	

2



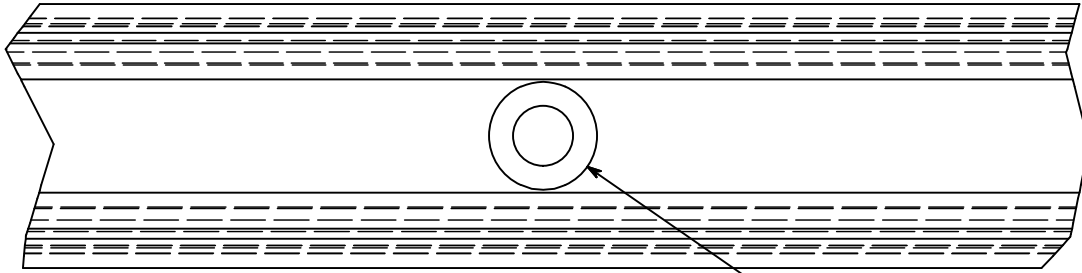
1

2

1

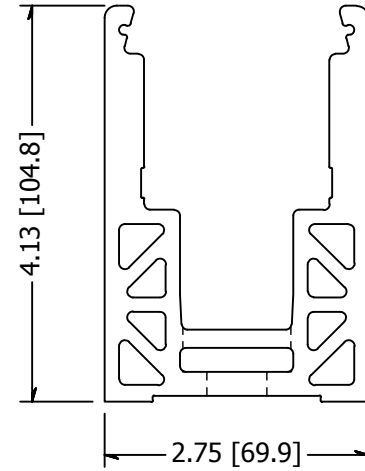
B

B



DETAIL B

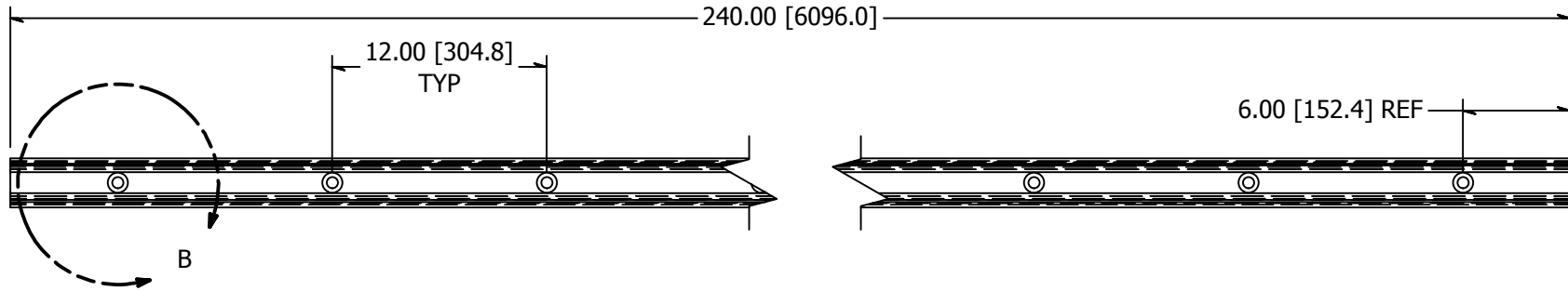
(20) Ø0.625 THRU
 □ Ø1.125 ▽ 0.438




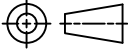
B

A

A



A

TOLERANCE X.X..... = ± .060 X.XX..... = ± .030 X.XXX..... = ± .010 XX°..... = ± 1° UNLESS OTHERWISE NOTED	CUT LENGTH:	FINISH:	DESCRIPTION: Shoe Moulding, AL, PanelGrip, 2-3/4 In Wide, 4-1/8 In High, Counterbored Holes		
		MILL	MATERIAL:	MATERIAL DESC:	
	DEVELOPED LENGTH:	WEIGHT:	DATE:	REV:	 COLLABORATIVE METAL WORKS
	TOOL NUMBER:		DRAWN BY:		
		97.59 lbmass	1/16/2015	-	
			K. Turdo		
			PART NUMBER:		
			GR2457HCB		

2

1

