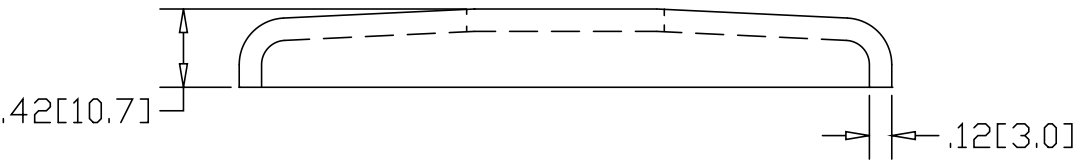
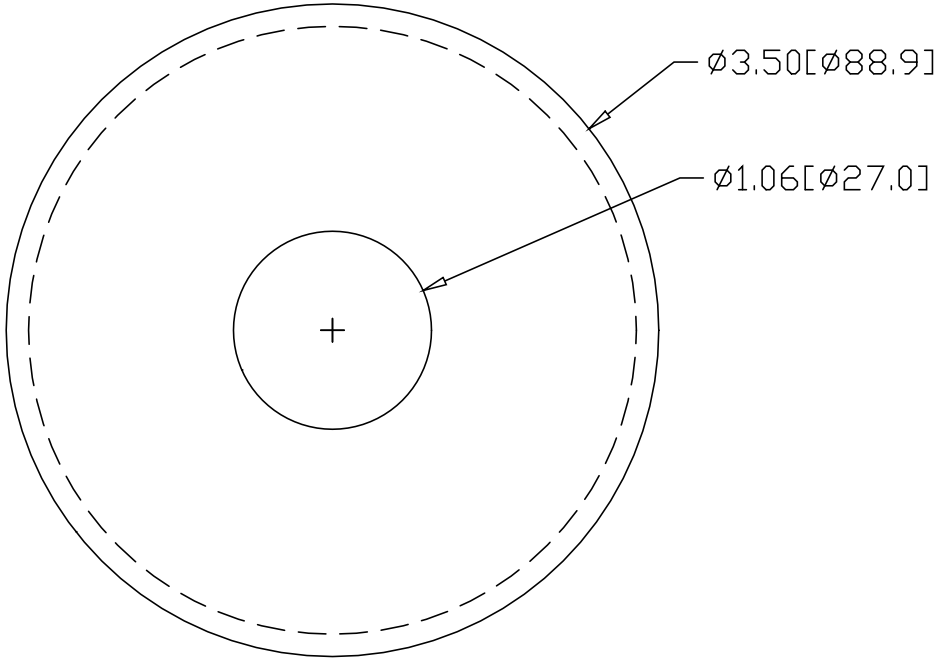



REV  
SH  
2510  
DWG NO

REVISIONS			
REV	DESCRIPTION	DATE	APPROVED



INCHES [MILLIMETERS]

ALTERNATE MATERIAL	PART NUMBER
.125 (3003) ALUMINUM ASTM B209	2550
10 GA. (304) STAINLESS STEEL ASTM A240	2590
.125 (280) MUNTZ METAL	BZ2510

PART NAME		3/4" PIPE HEAVY FLUSH BASE FLANGE		
MATERIAL		10 GA. HRP&D STEEL ASTM A569		
DATE	3/31/99	 <b>R &amp; B WAGNER, INC.</b>		
DRAWN BY	RJF			
FINISH	MILL	SIZE	WEIGHT	PART NUMBER
		A	.41 LBS	2510
				REV