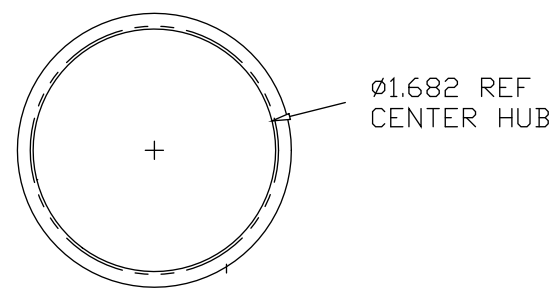
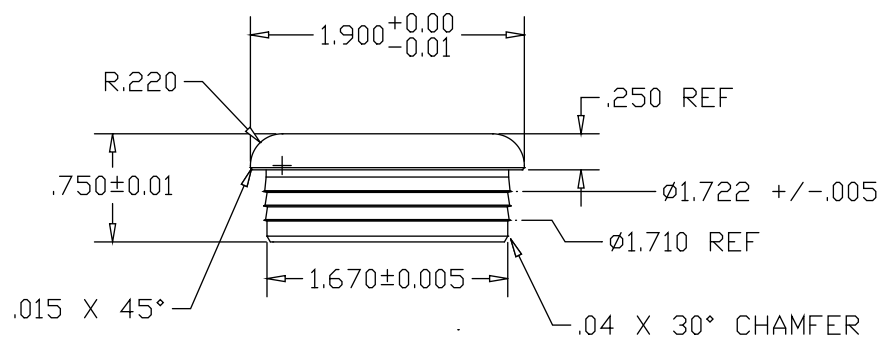



REV  
SH  
3298-L  
DWG NO

REVISIONS			
REV	DESCRIPTION	DATE	APPROVED



PART NAME 1.90 AL SC10 TYPE-G MACHINED DRIVE-ON CAP				
MATERIAL 6063-T52 ALUMINUM				
DATE 09/15/11	 <b>THE WAGNER COMPANIES</b> R & B WAGNER, INC. AND J. G. BRAUN CO.			
DRAWN BY RDC				
FINISH AS TURNED	SIZE A	WEIGHT .17 LBS.	PART NUMBER 3298-L	REV