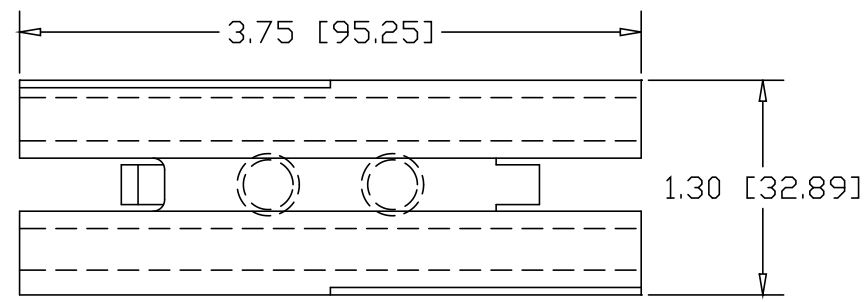
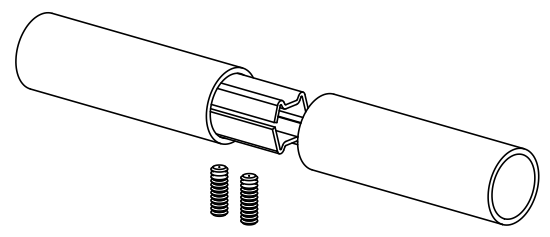
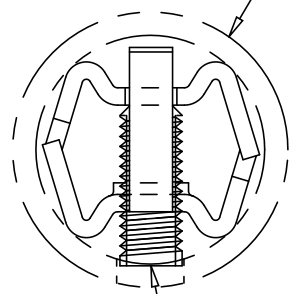


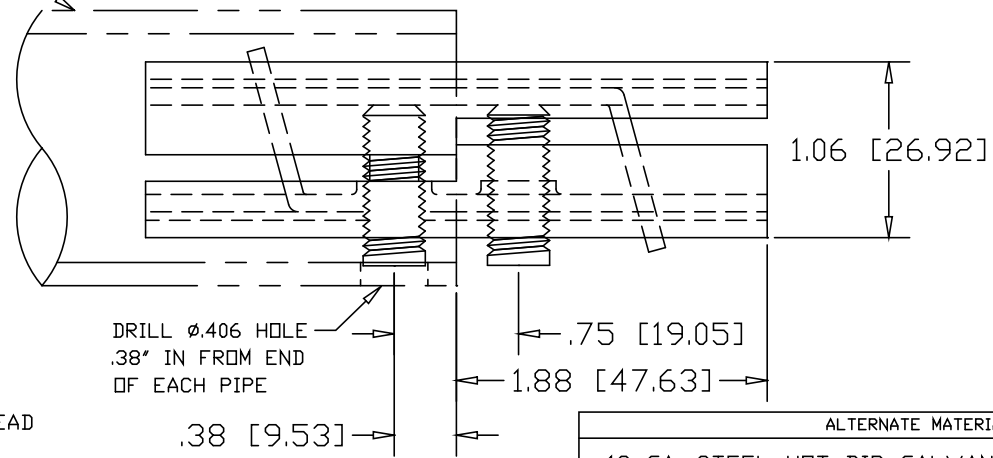
| REVISIONS | | | |
|-----------|-------------|------|----------|
| REV | DESCRIPTION | DATE | APPROVED |



1-1/4" SCH40 PIPE
(1.66" O.D. X .140 WALL)




3/8-16 SOCKET HEAD
SET-SCREW
(2) PLACES



DRILL ϕ .406 HOLE
.38" IN FROM END
OF EACH PIPE

| ALTERNATE MATERIAL | PART NO. |
|--------------------------------------|----------|
| 12 GA. STEEL HOT DIP GALVANIZED | G3354 |
| 12 GA. STEEL ZINC PLATED | PL3354 |
| .090 (3003) ALUMINUM ASTM B209 | 3355 |
| .090 (304) STAINLESS STEEL ASTM A240 | 3357 |

| | | | | | | | |
|-----------|---------|---|---------|-------------|------|-----|--|
| PART NAME | | 1-1/4" SCH40 PIPE DOUBLE-LOCK SPLICE-LOCK | | | | | |
| MATERIAL | | 12 GA. HRP&D STEEL ASTM A569 | | | | | |
| DATE | 3/22/93 |  R & B WAGNER, INC. | | | | | |
| DRAWN BY | RJF | | | | | | |
| FINISH | MILL | | | | | | |
| SIZE | A | WEIGHT | .45 LBS | PART NUMBER | 3354 | REV | |