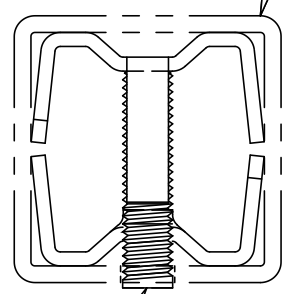
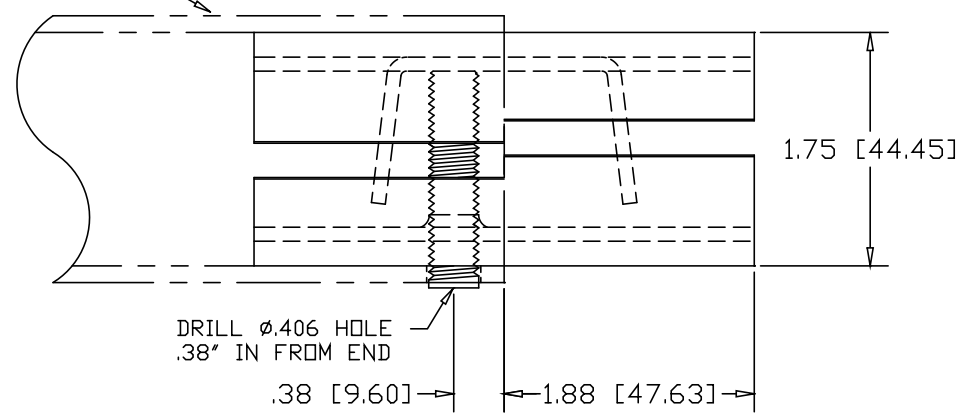
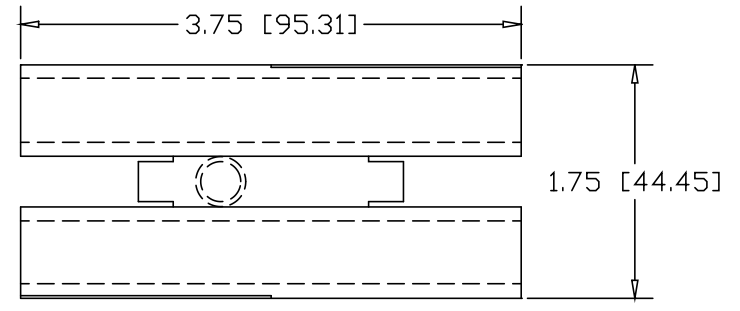


REVISIONS			
REV	DESCRIPTION	DATE	APPROVED

2.00" SQ. .125W TUBE




3/8-16 SOCKET HEAD SET-SCREW X 1-5/8" LONG



DRILL Ø.406 HOLE
.38" IN FROM END

INCHES [MILLIMETERS]

ALTERNATE MATERIAL	PART NO.
12 GA. STEEL HOT DIP GALVANIZED	G3341-4
12 GA. STEEL ZINC PLATED	PL3341-4
.090 (3003) ALUMINUM ASTM B209	3344-4
.090 (304) STAINLESS STEEL ASTM A240	3347-4

PART NAME				2.00" SQ. .125W TUBE SINGLE-LOCK SPLICE-LOCK			
MATERIAL				12 GA. HRP&D STEEL ASTM A569			
DATE	9/25/01			R & B WAGNER, INC.		PART NUMBER	
DRAWN BY	JAH					3341-4	REV
FINISH	MILL					SIZE	A