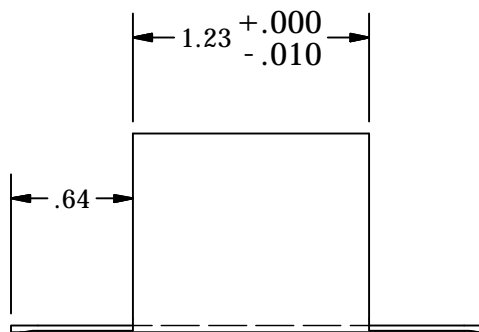


2

1



#4 On Outside

R.035 ± .010

1.00 ± .030

4.125 ^{+.000} _{-.030}

← GRAIN →

R.14

2.500 ^{+.000} _{-.010}

REVISION HISTORY

REV	DESCRIPTION	DATE
1	Revised Height From 4.00 to 4.125	06/15/16

TOLERANCE UNLESS OTHERWISE NOTED, TOLERANCES TO CONFORM TO ES.03.011	CUT LENGTH:	FINISH:	DESCRIPTION: END CAP, CLADDING, GLASS RAIL SHOE MOLDING, 2.50 x 4.13	
		#4 Satin	MATERIAL: S619	MATERIAL DESC: 20GA. Sheet 304 SS 48 X 120 X .0350
	DEVELOPED LENGTH:	WEIGHT:	DATE: 1/18/2018	REV: 1
	TOOL NUMBER:	0.12 lbmass	DRAWN BY: T. Kolbach	
			PART NUMBER: GR3852E.4	

WAGNER 10600 W Brown Deer Rd
 Milwaukee, WI 53224
 COLLABORATIVE METALWORKS <http://www.wagnercompanies.com/>

2

1

