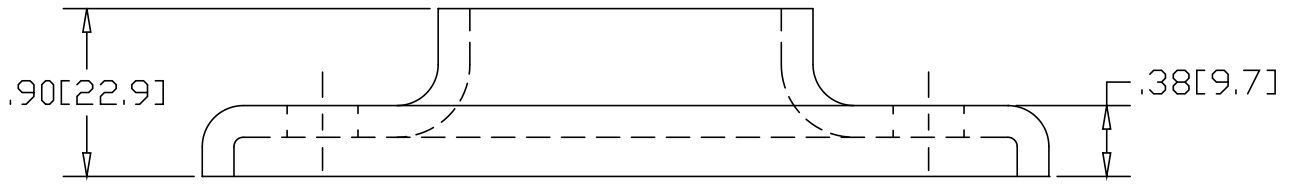
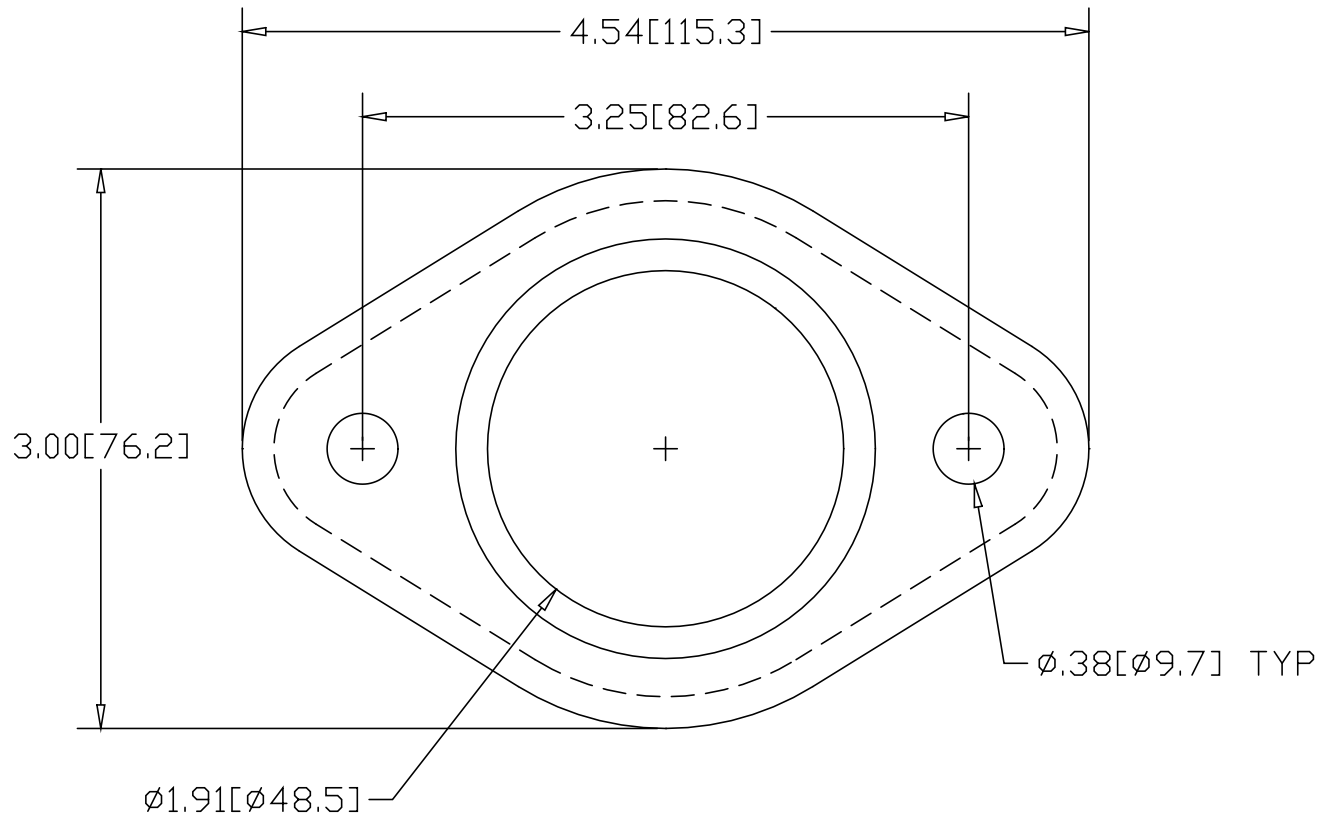


REV
SH
4916
DWG NO


| REVISIONS | | | |
|-----------|-------------|------|----------|
| REV | DESCRIPTION | DATE | APPROVED |



*USE WITH ANCHOR PLATE
 #4919 IN STEEL
 #4949 IN ALUMINUM
 #4979 IN STAINLESS

INCHES [MILLIMETERS]

| ALTERNATE MATERIAL | PART NUMBER |
|---------------------------------------|-------------|
| .190 (3003) ALUMINUM ASTM B209 | 4946 |
| 7 GA. (304) STAINLESS STEEL ASTM A240 | 4976 |

| | | | |
|--|---|--------------------|----------------|
| PART NAME 1-1/2" PIPE SIZE TAPERED HEAVY BASE FLANGE W/(2) HOLES | | | |
| MATERIAL 7 GA. HRP&D STEEL ASTM A569 | | | |
| DATE 5/22/95 |  | R & B WAGNER, INC. | |
| DRAWN BY RJF | | SIZE A | WEIGHT .47 LBS |
| FINISH MILL | | | REV |