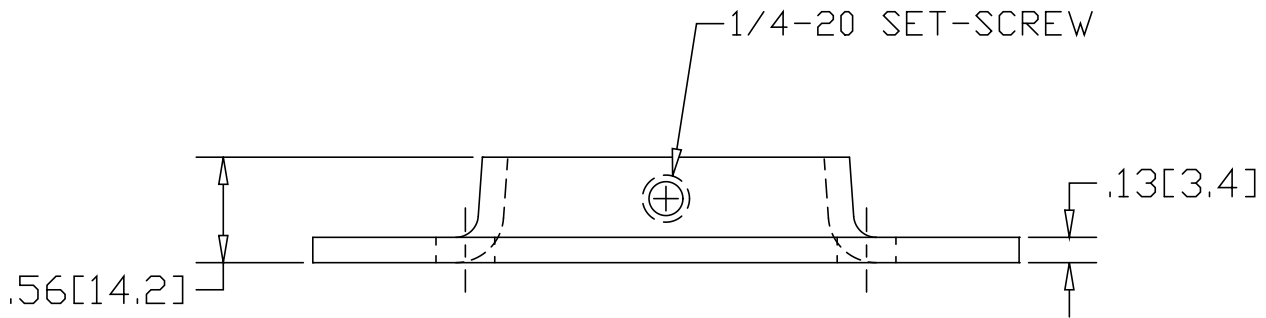
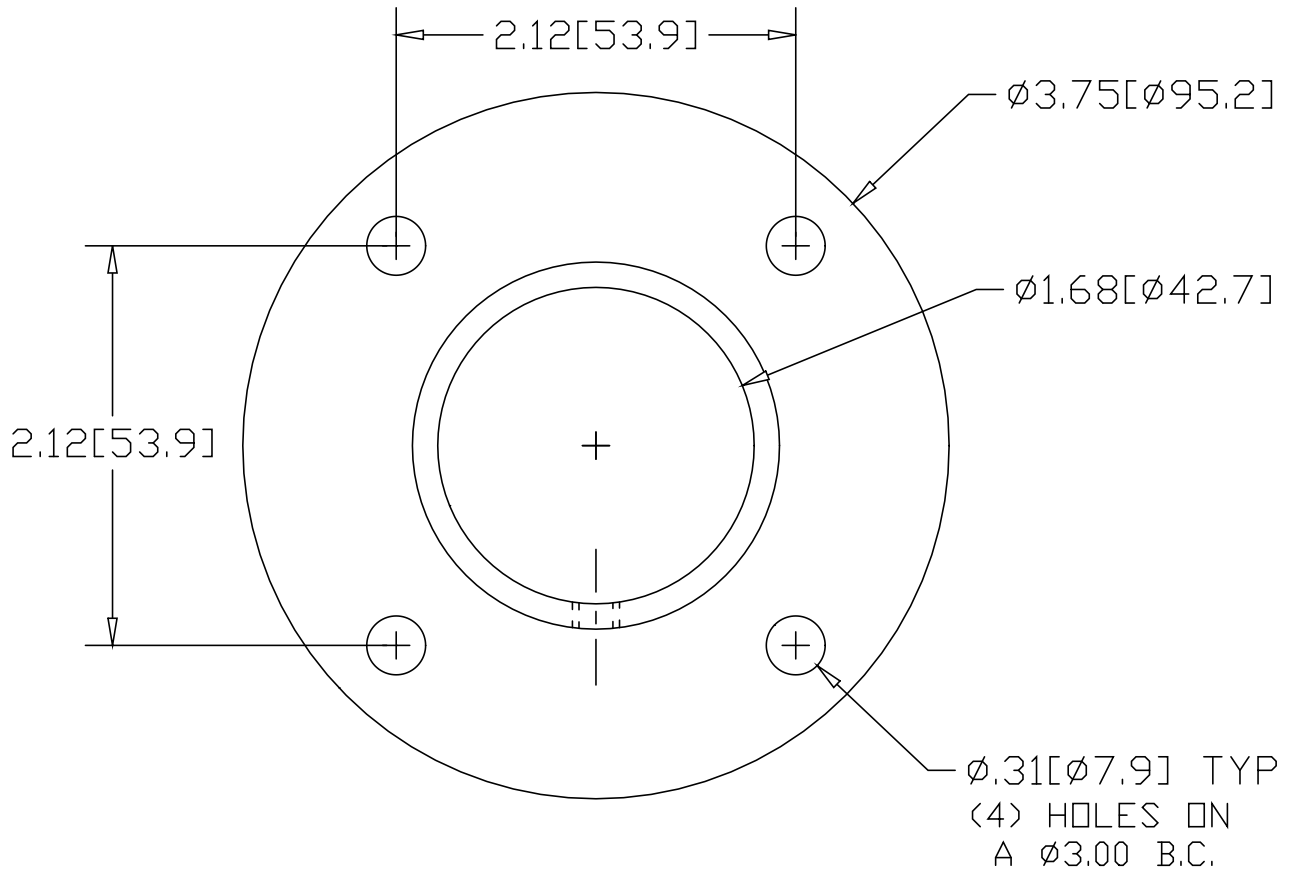



REV
SH
631
DWG NO

| REVISIONS | | | |
|-----------|-------------|------|----------|
| REV | DESCRIPTION | DATE | APPROVED |



INCHES [MILLIMETERS]

| ALTERNATE MATERIAL | PART NUMBER |
|--|-------------|
| .125 (3003) ALUMINUM ASTM B209 | 671 |
| 10 GA. (304) STAINLESS STEEL ASTM A240 | 711 |

| | | | |
|--|---|--------------------|--------|
| PART NAME 1-1/4" FLAT BASE PIPE FLANGE W/(4) HOLES AND SET-SCREW | | | |
| MATERIAL 10 GA. HRP&D STEEL ASTM A-569 | | | |
| DATE 1/7/99 |  | R & B WAGNER, INC. | |
| DRAWN BY RJF | | FINISH MILL | SIZE A |
| | | PART NUMBER 631 | REV |