

REV

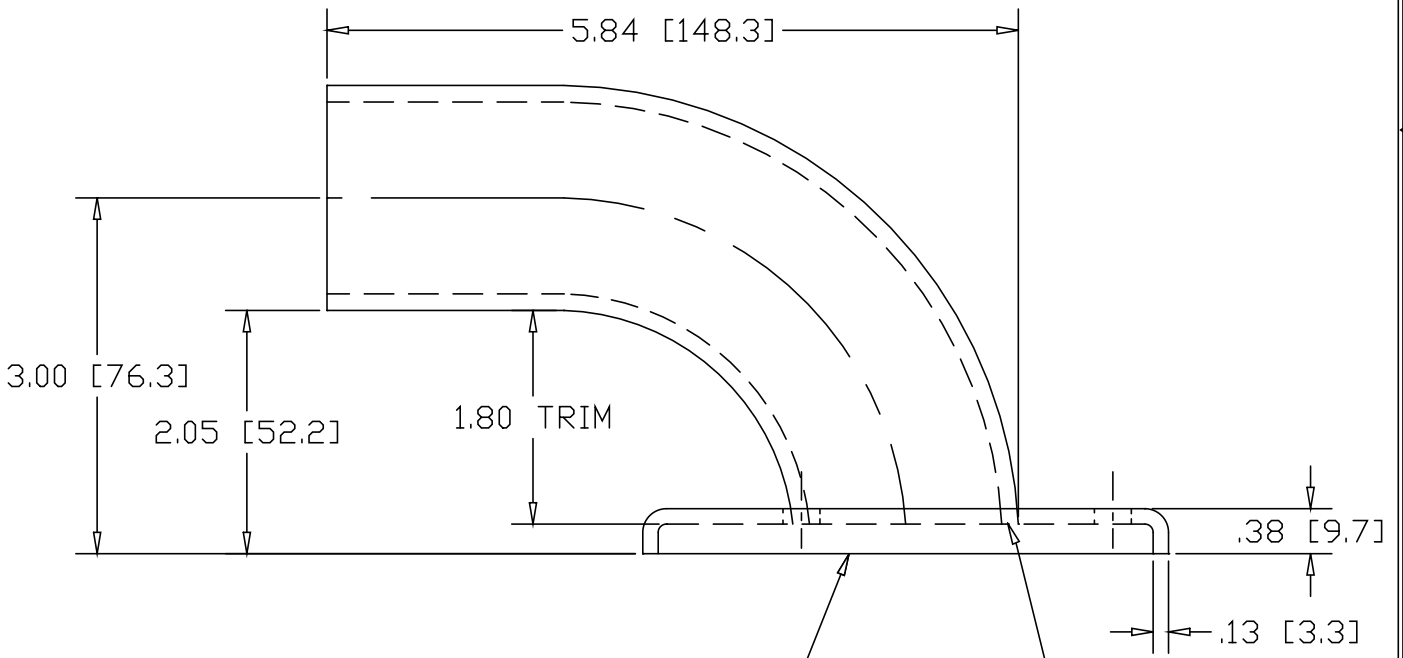
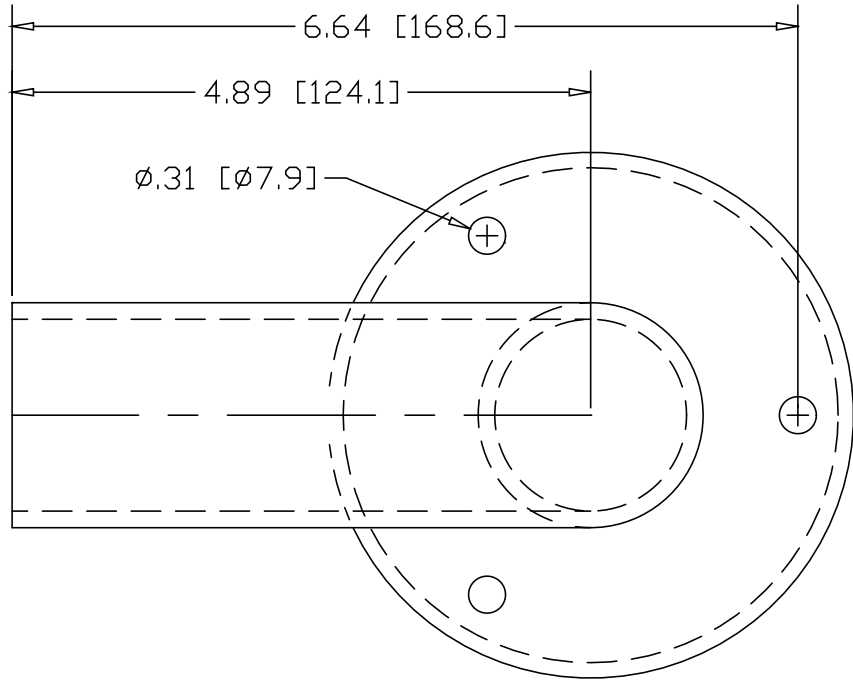
SH

1142-3

DWG NO

REVISIONS

REV	DESCRIPTION	DATE	APPROVED
-----	-------------	------	----------



HEAVY FLUSH BASE
PIPE FLANGE #2575A

WELD ALL-AROUND
INCHES [MILLIMETERS]

PART NAME		1-1/2" PIPE SIZE X 3.00"CL WALL RETURN W/3 HOLES		
MATERIAL		6063 ALUMINUM		
DATE	10/03/02		THE WAGNER COMPANIES R & B WAGNER, INC. AND J. G. BRAUN CO.	
DRAWN BY	JAH			
FINISH	MILL			
SIZE	A	WEIGHT	PART NUMBER	1142-3
			REV	