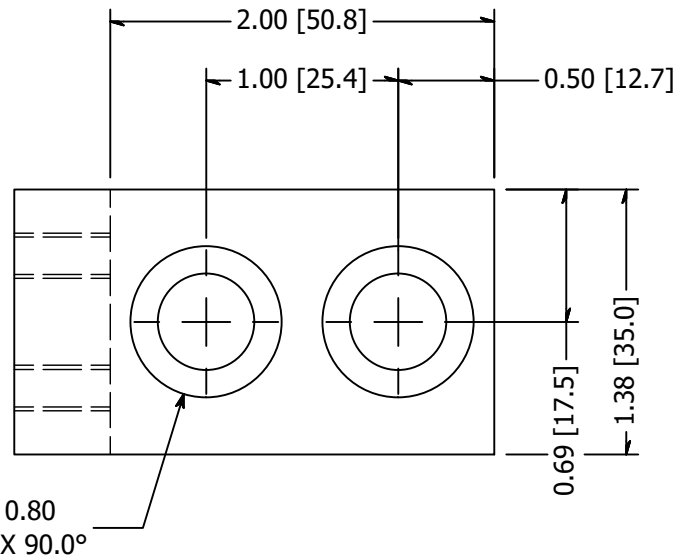
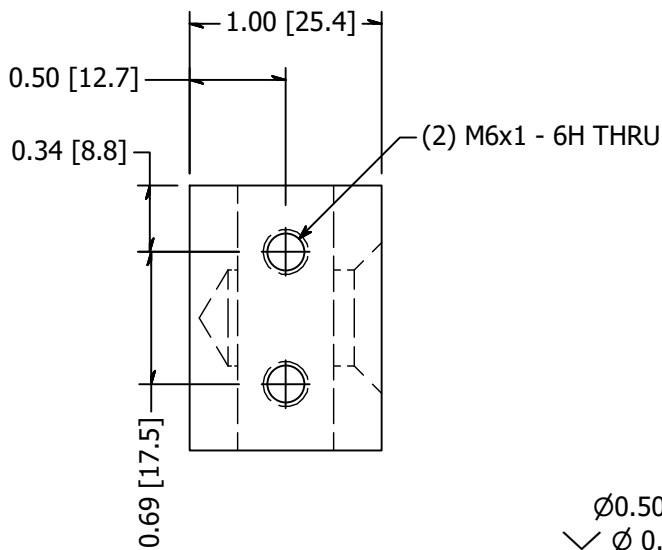
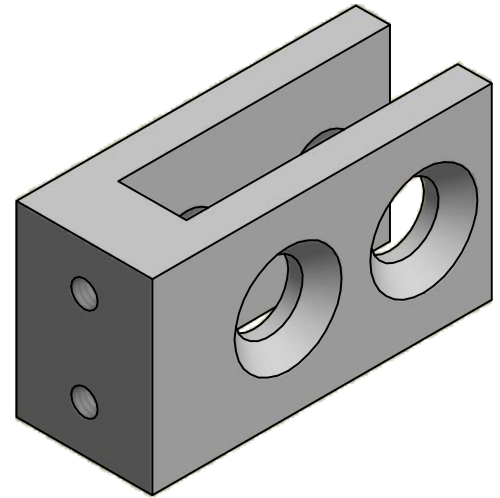
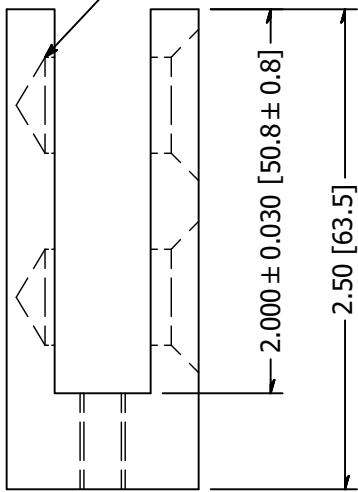


0.50 [12.7] FOR BOLT CLEARANCE, DO NOT PUNCTURE WALL



REVISION HISTORY			
REV	DESCRIPTION	DATE	APPROVED
1	Convert to Metric	3/20/2015	TLK
2	M10x1.5 Thru Tap	9/15/2015	TLK
1	M6 TAP WAS 1/4-20, REMOVED 3/8-16 TAP	9/10/2019	AHS
TOLERANCE UNLESS OTHERWISE NOTED, TOLERANCES TO CONFORM TO ES.03.011	MATERIAL: 316 Stainless	DESCRIPTION: Point Fitting, Stainless Steel, Blade Adapter, Brushed Satin Finish, Grade 316, 0.50 Inch Glass	
	FINISH: Satin Brushed	DATE: 9/23/2019	REV: 3
	WEIGHT: 0.54 lbmass	DRAWN BY: T. Kolbach	ITEM NUMBER: LXFP30-BLADE


WAGNER™
 10600 W Brown Deer Rd
 Milwaukee, WI 53224
 COLLABORATIVE METALWORKS <http://www.wagnercompanies.com/>