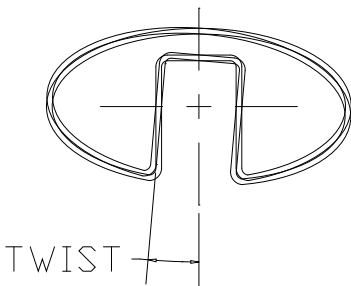
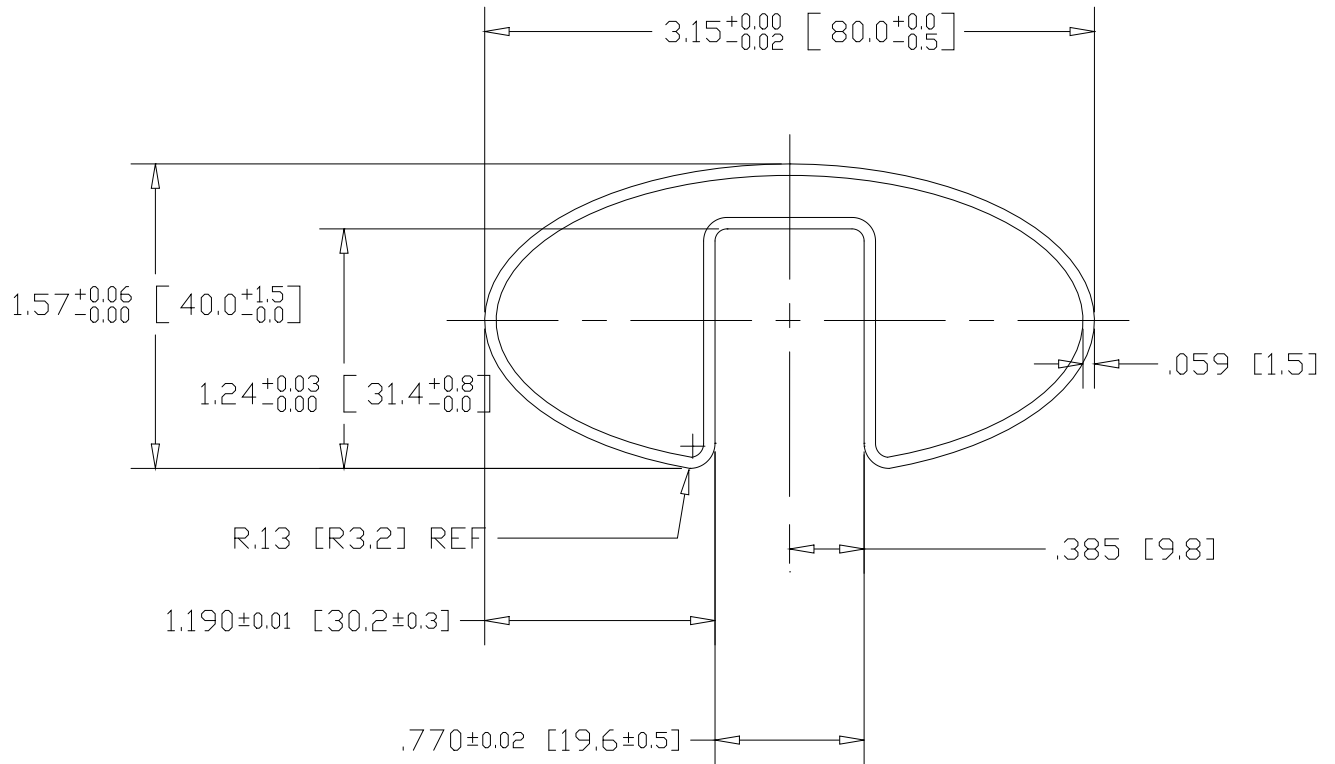



REV 1
SH
GR3315
DWG NO

REVISIONS			
REV	DESCRIPTION	DATE	APPROVED
1	RELEASED FROM EXP148	06/25/10	PWH



NOTE: MAXIMUM ALLOWABLE TWIST
0.5° PER FOOT WITH MAXIMUM 5.0° PER LENGTH

INCHES [MILLIMETERS]

PART NAME		3.15 X 1.58 OVAL CAPRAIL	
MATERIAL		304 STAINLESS STEEL	
DATE	06/25/10	 THE WAGNER COMPANIES R & B WAGNER, INC. AND J. G. BRAUN CO.	
DRAWN BY	PWH		
FINISH	MILL		
SIZE	A	WEIGHT	
PART NUMBER		GR3315	
REV		1	