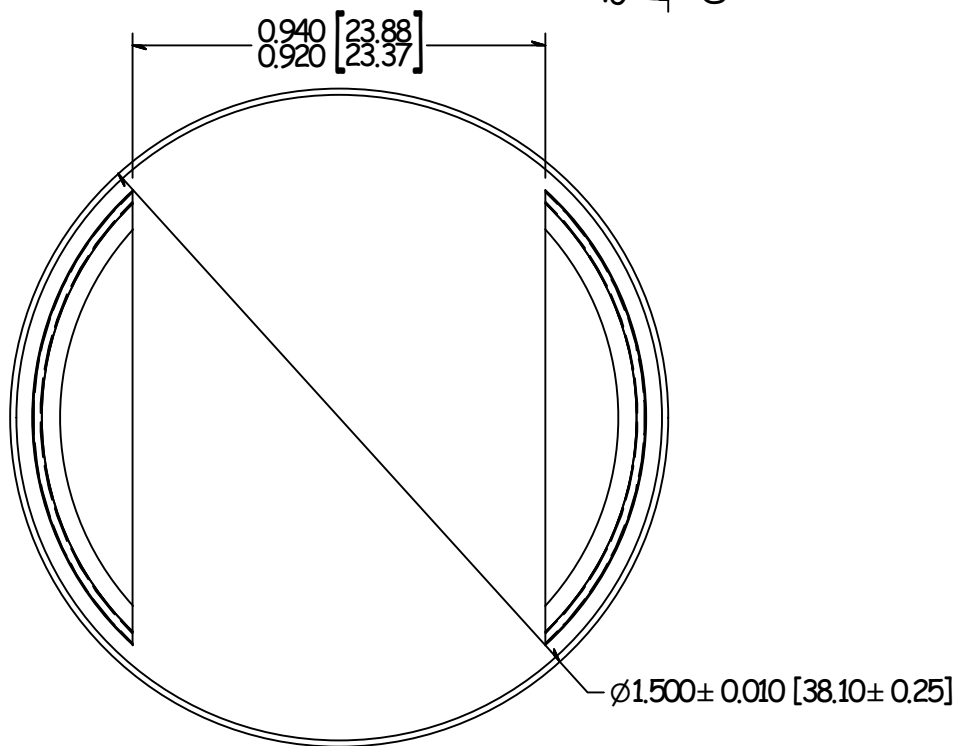
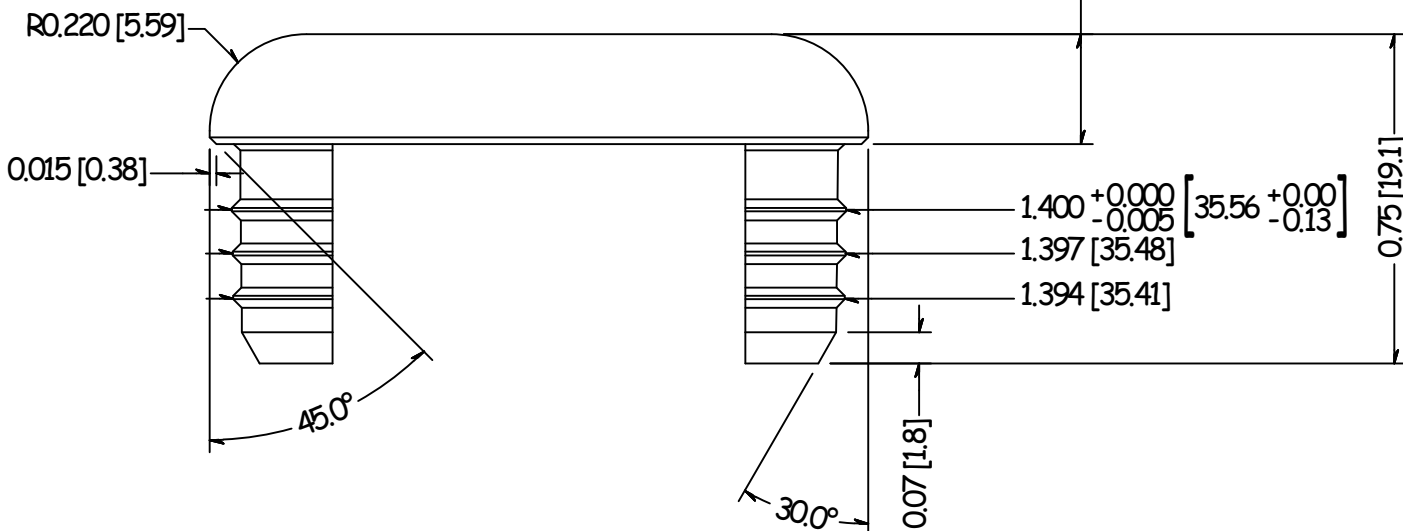
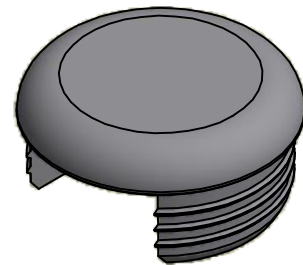


2

1



| REVISION HISTORY | | |
|------------------|---------------------------|-----------|
| REV | DESCRIPTION | DATE |
| 1 | Update Per Shop Machinist | 3/18/2013 |

| | | | | | |
|--|-------------------|-------------|------------------------------------|--|--|
| TOLERANCE UNLESS OTHERWISE NOTED, TOLERANCES TO CONFORM TO ES.03.011 | CUT LENGTH: | FINISH: | DESCRIPTION: | | |
| | | Mill | CAP SS GLASS RAIL 1.50 #4 TYPE 316 | | |
| | DEVELOPED LENGTH: | WEIGHT: | MATERIAL: | MATERIAL DESC: | |
| | | 0.16 lbmass | B326 | 1-3/4 In. Round 316 SS 12 Ft. ASTM A479 | |
| TOOL NUMBER: | | DATE: | REV: | 10600 W Brown Deer Rd Milwaukee, WI 53224 COLLABORATIVE METALWORKS http://www.wagnercompanies.com/ | |
| | | 3/18/2013 | 1 | | |
| | | DRAWN BY: | PART NUMBER: | | |
| | | R. Kneprath | GR3152E.4 | | |

2

1