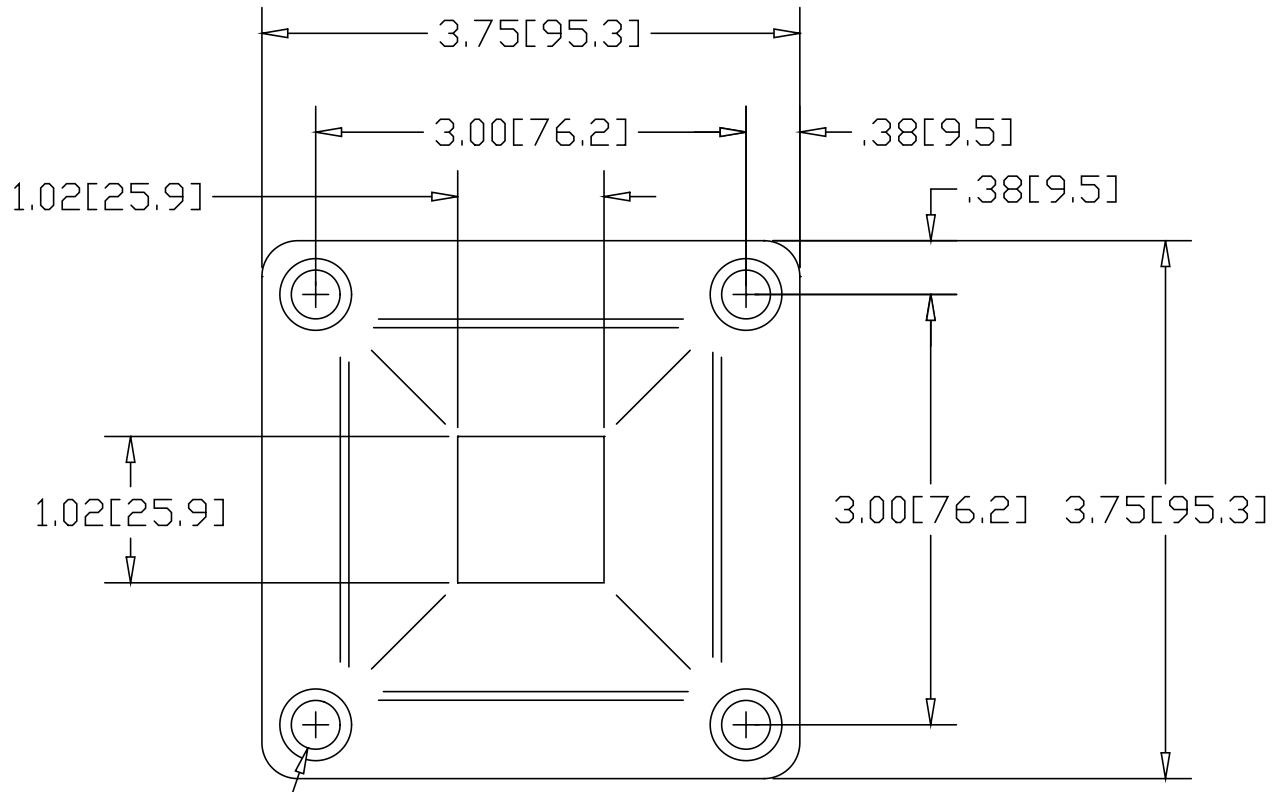
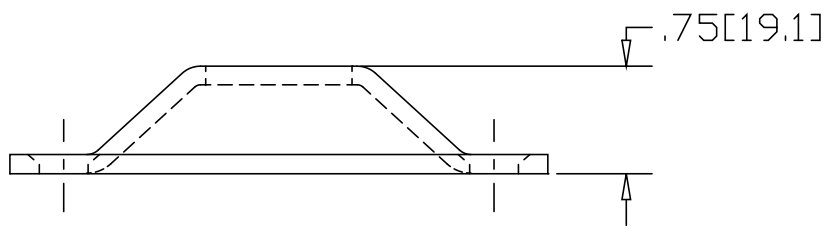


REV
SH
8041
DWG NO

REVISIONS			
REV	DESCRIPTION	DATE	APPROVED




Ø.34[Ø8.6] TYP
W/C'SINK



*USE WITH ANCHOR PLATE
#8057 IN STEEL
#8058 IN ALUMINUM

INCHES [MILLIMETERS]

ALTERNATE MATERIAL	PART NUMBER
.125 (3003) ALUMINUM ASTM B209	8042

PART NAME 1" SQUARE TUBE FLANGE WITH (4) HOLES			
MATERIAL 10 GA. HRP&D STEEL ASTM A569			
DATE 7/24/96	 R & B WAGNER, INC.		
DRAWN BY RJF			
FINISH MILL	SIZE A	WEIGHT .53 LBS	PART NUMBER 8041
			REV