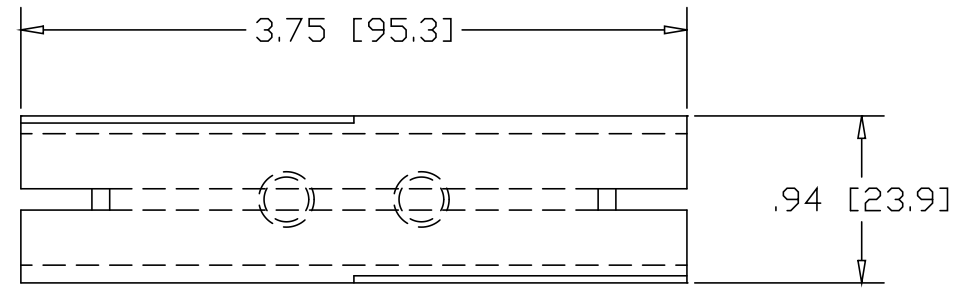
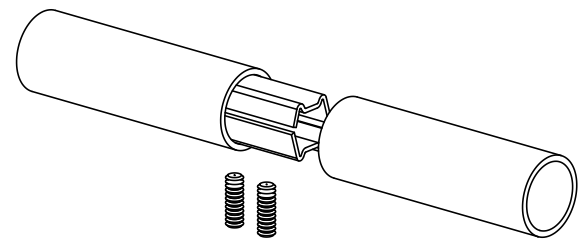
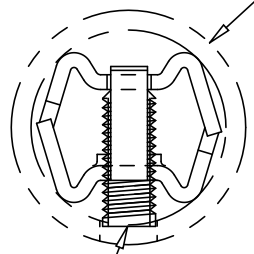


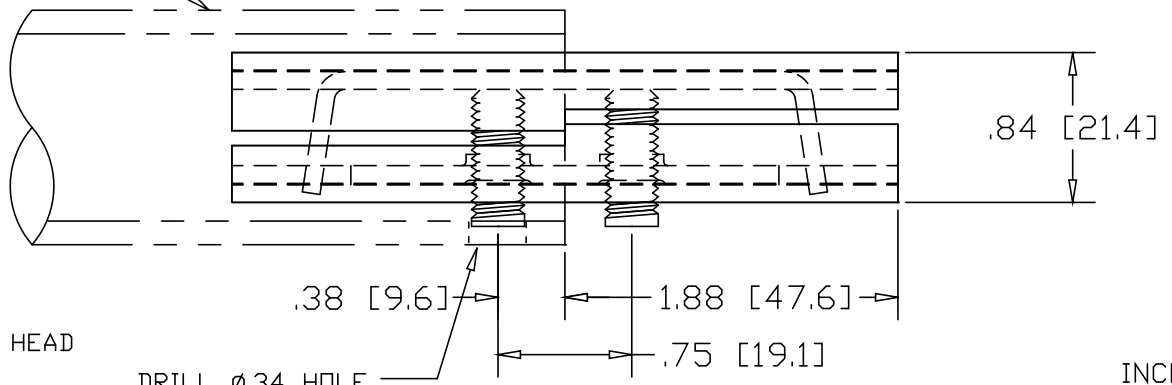
REVISIONS			
REV	DESCRIPTION	DATE	APPROVED



1" SCH 40 PIPE
(1.315 O.D. X .133 WALL)




5/16-18 SOCKET HEAD
SET-SCREW



DRILL ϕ .34 HOLE
.38" IN FROM EACH
END FOR SET-SCREW

INCHES [MILLIMETERS]

ALTERNATE MATERIAL	PART NO.
12 GA. STEEL HOT DIP GALVANIZED	G3310
12 GA. STEEL ZINC PLATED	PL3310
.090 (3003) ALUMINUM ASTM B209	3351
.090 (304) STAINLESS STEEL ASTM A240	3353

PART NAME		1" SCH40 PIPE DOUBLE-LOCK SPLICE-LOCK		
MATERIAL		12 GA. HRP&O STEEL ASTM A569		
DATE	9/25/97	 R & B WAGNER, INC.		
DRAWN BY	RJF			
FINISH	MILL	SIZE	WEIGHT	PART NUMBER
		A	.26 LBS	3350
				REV