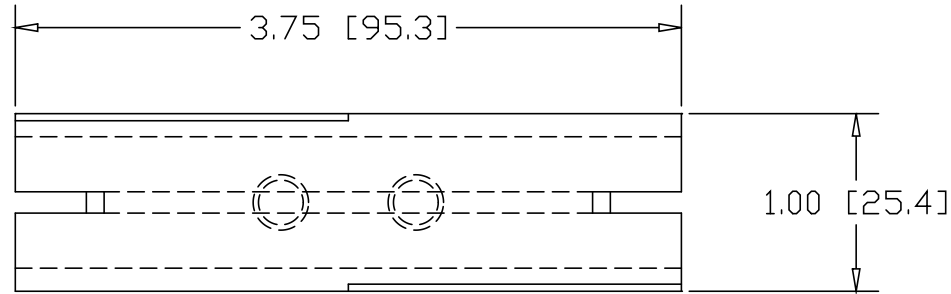
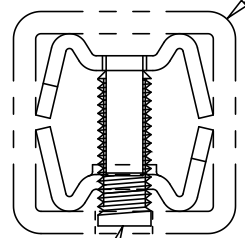


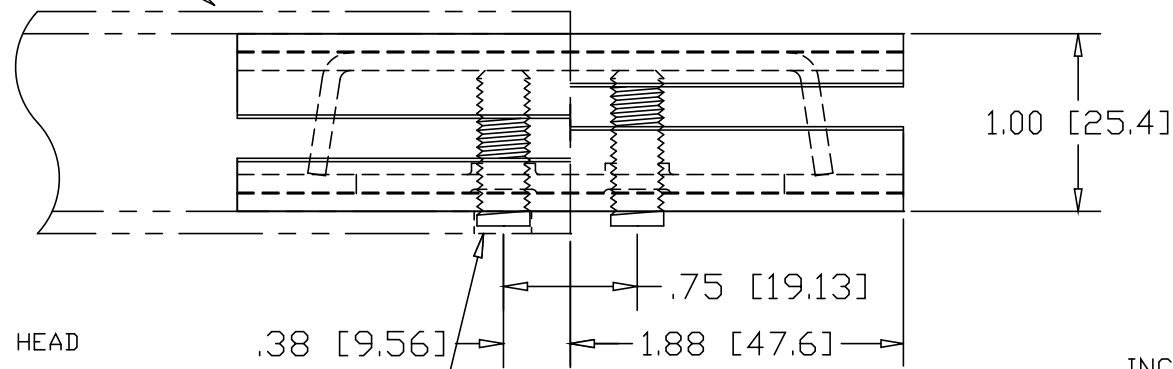
REVISIONS			
REV	DESCRIPTION	DATE	APPROVED



1.25" SQ. .125W TUBE




5/16-18 SOCKET HEAD SET-SCREW



DRILL  $\phi$ .34 HOLE  
.38" IN FROM EACH  
END FOR SET-SCREW

INCHES [MILLIMETERS]

ALTERNATE MATERIAL	PART NO.
12 GA. STEEL HOT DIP GALVANIZED	G3381
12 GA. STEEL ZINC PLATED	PL3381
.090 (3003) ALUMINUM ASTM B209	3382
.090 (304) STAINLESS STEEL ASTM A240	3383

PART NAME 1.25" SQ. .125W TUBE DOUBLE-LOCK SPLICE-LOCK			
MATERIAL 12 GA. HRP&D STEEL ASTM A569			
DATE 9/25/01	 <b>R &amp; B WAGNER, INC.</b>		
DRAWN BY JAH			
FINISH MILL			
SIZE A	WEIGHT .26 LBS	PART NUMBER 3381	REV