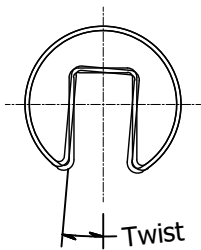
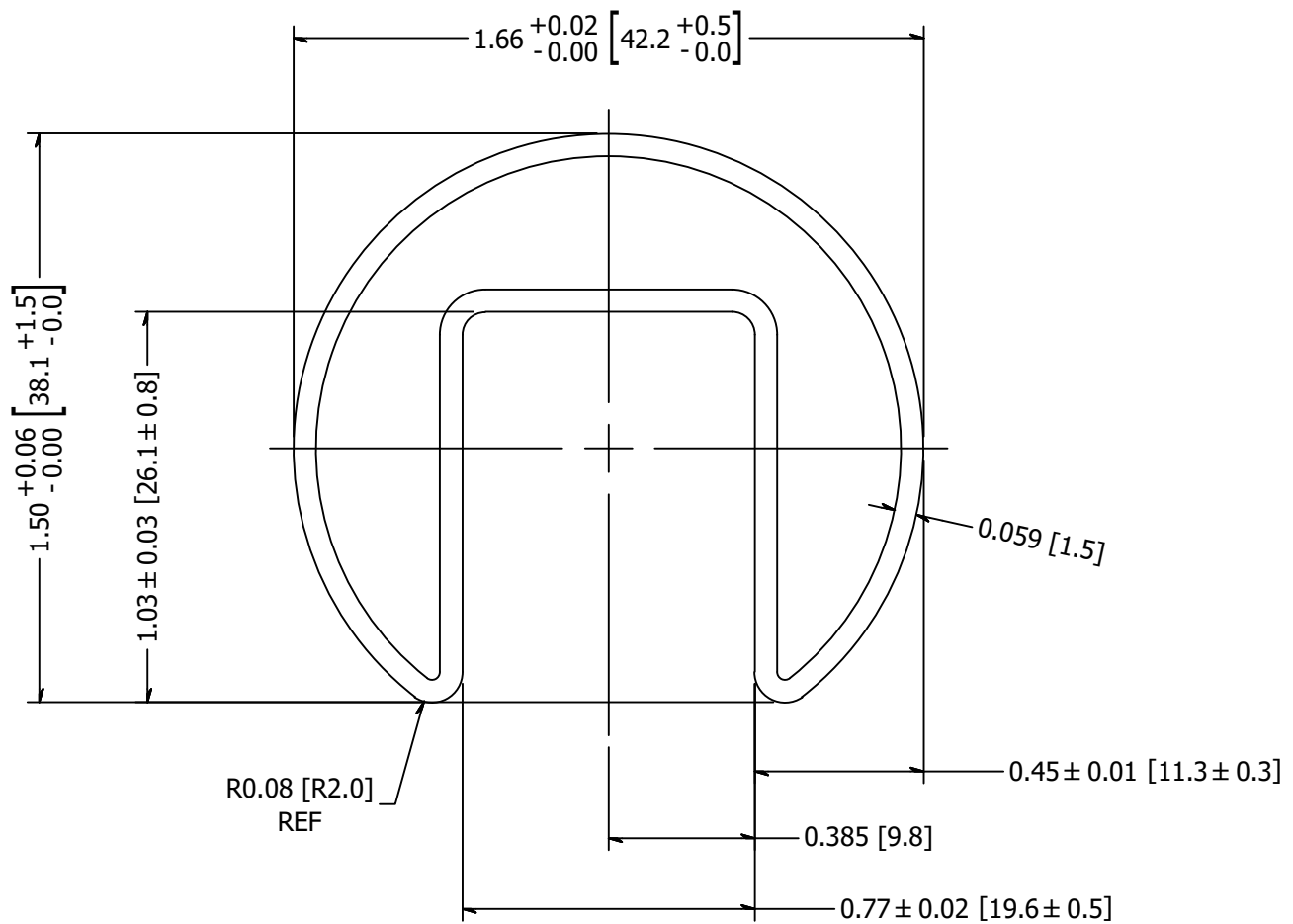
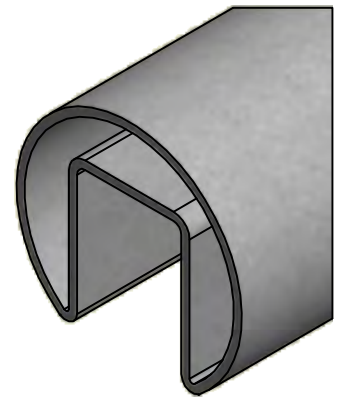


2

1



NOTE: MAXIMUM ALLOWABLE TWIST
0.5° PER FOOT WITH
MAXIMUM 5.0° PER LENGTH

REVISION HISTORY		
REV	DESCRIPTION	DATE
1	1.50 Was 1.45, Added R.08 Dim	08/24/2005
2	1.50 Marked As "Reference"	10/19/2005
3	Revised Dimensions & Tolerances	04/01/2008
4	Revised 1.66 OD Tolerance For Casting Fitment	03/27/2009

TOLERANCE UNLESS OTHERWISE NOTED, TOLERANCES TO CONFORM TO ES.03.011	CUT LENGTH:	FINISH: #4 Satin	DESCRIPTION: CAPRAIL SS GLASS RAIL 1.66 304 .059W 18FT #4 CIRCUMFERENCIAL	
	DEVELOPED LENGTH:	WEIGHT: 25.64 lbmass	MATERIAL: GR3166.4	MATERIAL DESC: 1-1/4 Schd 5 Caprail 304 SS 1.66 OD .059 Wall 18 Ft.
	TOOL NUMBER:		DATE: 2/15/2018	REV: 4
			DRAWN BY: T. Kolbach	PART NUMBER: GR3166.4

WAGNER 10600 W Brown Deer Rd
Milwaukee, WI 53224
COLLABORATIVE METALWORKS <http://www.wagnercompanies.com/>

2

1