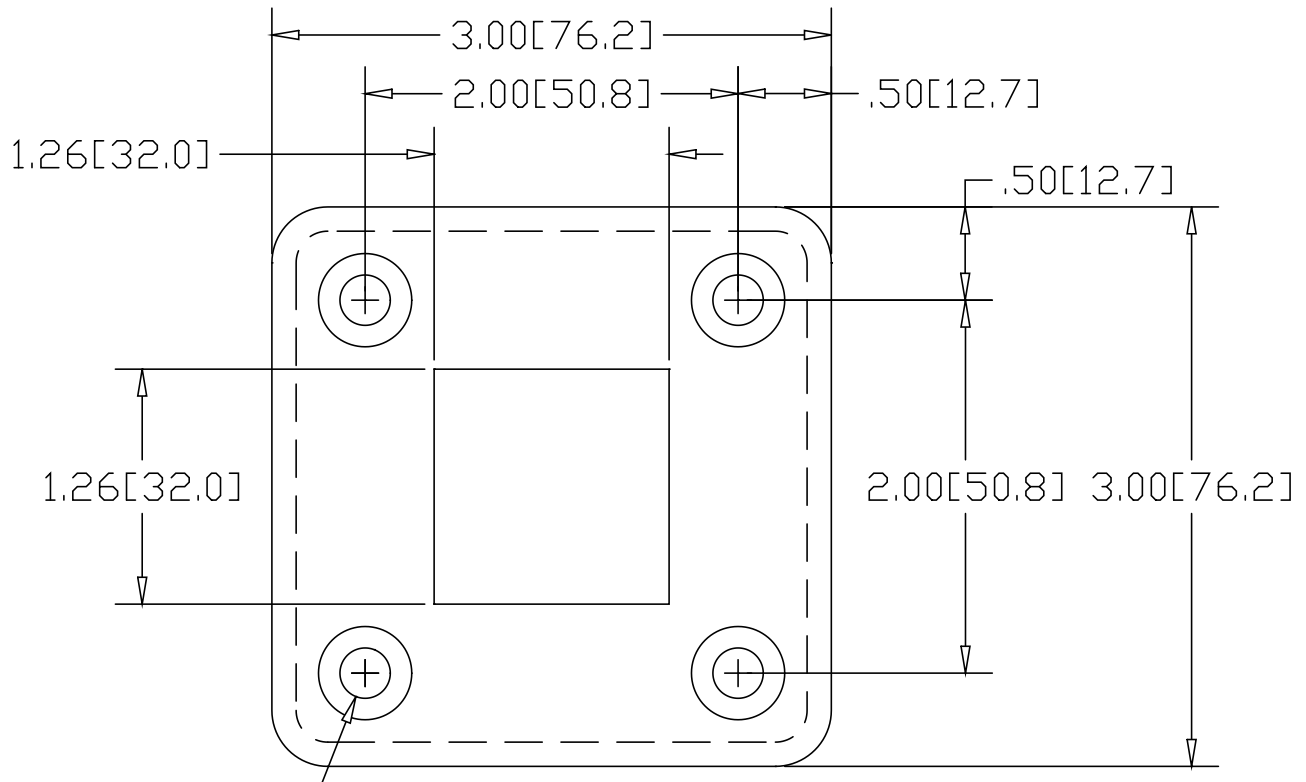
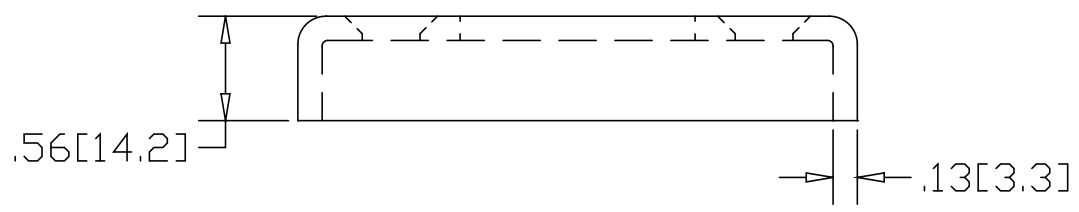


REV
SH
DWG NO 8716

REVISIONS			
REV	DESCRIPTION	DATE	APPROVED




Ø.27[Ø6.9] TYP
W/C'SINK



*USE WITH ANCHOR PLATE
#8706 IN STEEL
#8776 IN ALUMINUM
#8846 IN STAINLESS

INCHES [MILLIMETERS]

ALTERNATE MATERIAL	PART NUMBER
.125 (3003) ALUMINUM ASTM B209	8786
10 GA. (304) STAINLESS STEEL ASTM A240	8856

PART NAME		1-1/4" SQUARE TUBE HFB FLANGE W/(4) HOLES					
MATERIAL		10 GA. HRP&O STEEL ASTM A569					
DATE	6/20/95	 R & B WAGNER, INC.					
DRAWN BY	RJF						
FINISH	MILL						
SIZE	A	WEIGHT	.42 LBS	PART NUMBER	8716	REV	