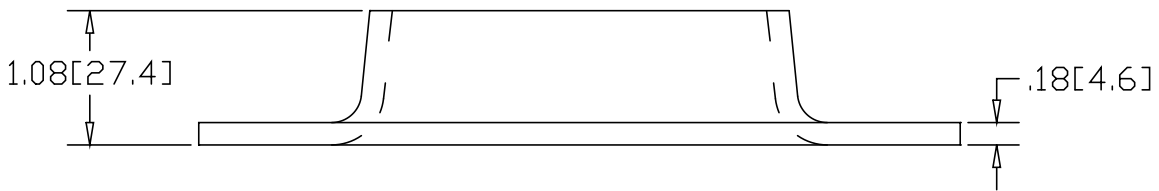
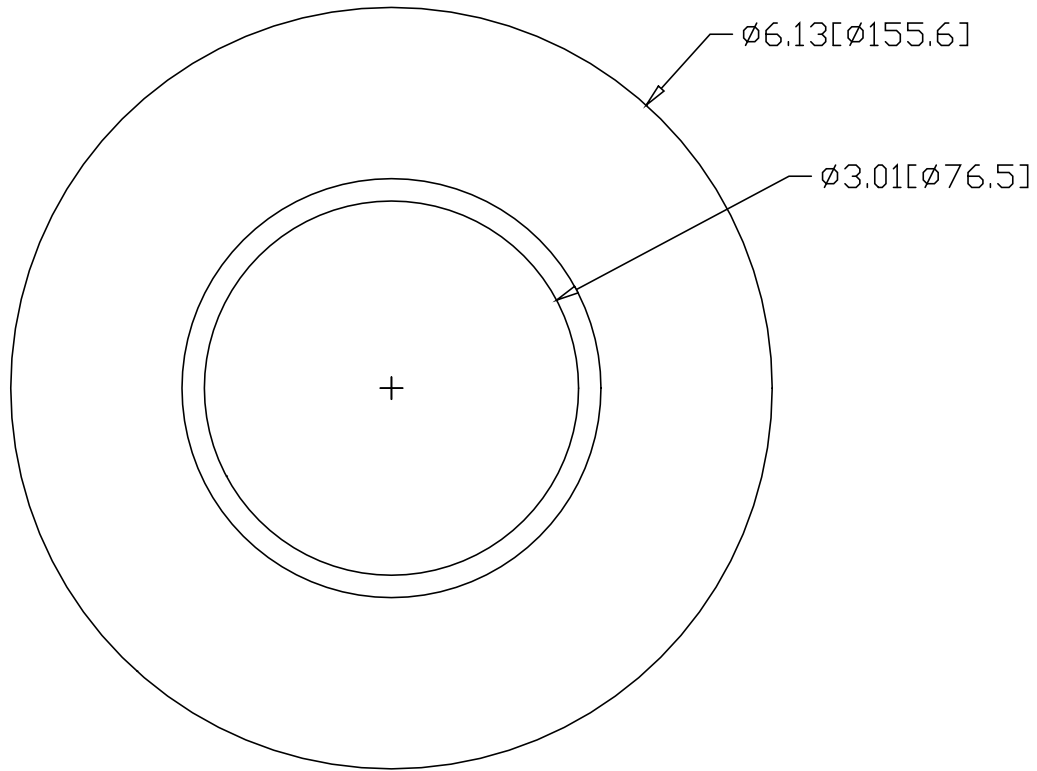


REV  
SH  
1700-T  
DWG NO

REVISIONS			
REV	DESCRIPTION	DATE	APPROVED



INCHES [MILLIMETERS]

ALTERNATE MATERIAL	PART NUMBER
.19 (3003) ALUMINUM ASTM B-209	1700A-T
7 GA. (304) STAINLESS STEEL ASTM A-240	1700-TSS
.1875 (260) BRASS ASTM B19,B36	BRS1700-T

PART NAME 3" O.D. TUBE SIZE EXTRA HEAVY FLANGE			
MATERIAL 7 GA. HRP&D STEEL ASTM A-569			
DATE 3/3/95		<b>THE WAGNER COMPANIES</b> R & B WAGNER, INC. AND J. G. BRAUN CO.	
DRAWN BY RJF			
FINISH MILL			
SIZE A	WEIGHT 1.34 LBS	PART NUMBER 1700-T	REV