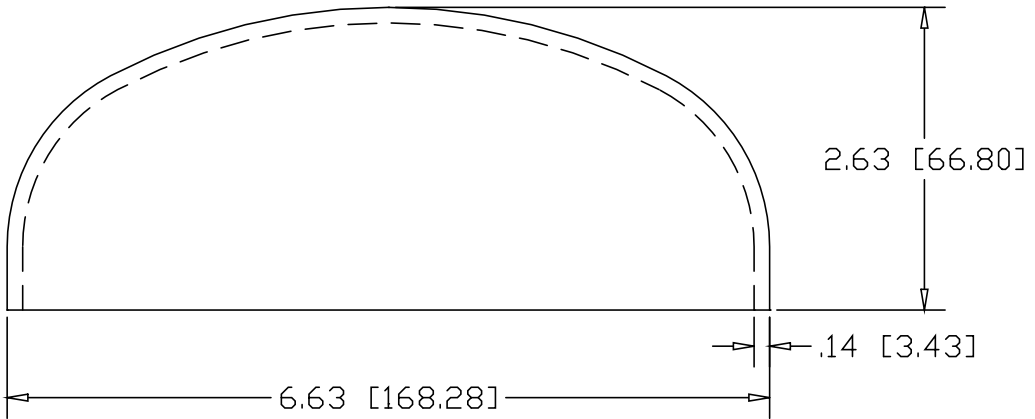
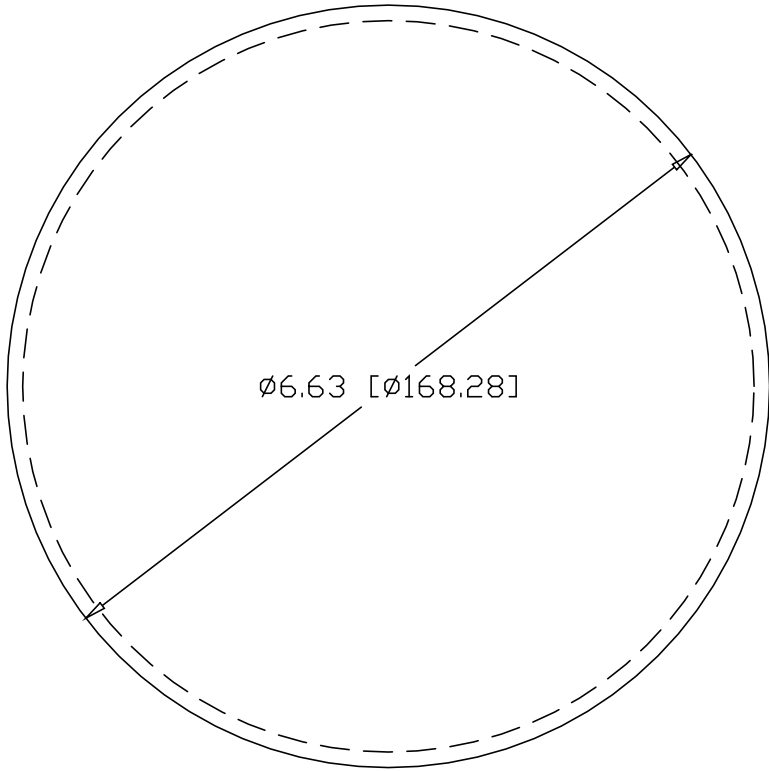



DWG NO 3265-6.316  
SH  
REV

REVISIONS			
REV	DESCRIPTION	DATE	APPROVED



INCHES [MILLIMETERS]

PART NAME		6" PIPE SIZE TYPE "C" WELD-ON END CAP					
MATERIAL		11 GA. (.1200) 316L-2B					
DATE	3/19/07		R & B WAGNER, INC.				
DRAWN BY	RDC						
FINISH	MILL						
SIZE	A	WEIGHT	2.89LBS	PART NUMBER	3265-6.316	REV	