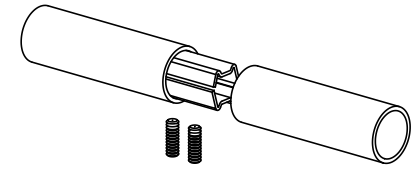
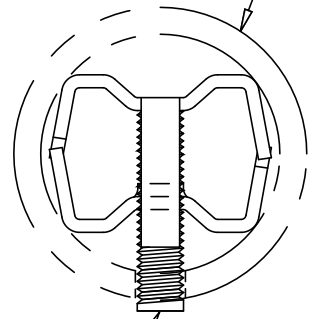


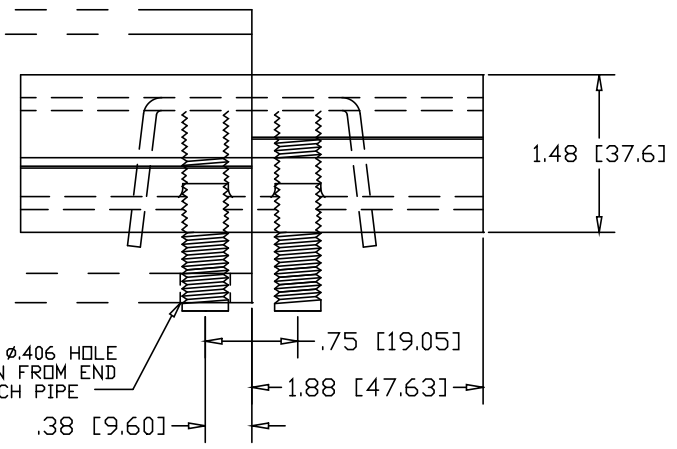
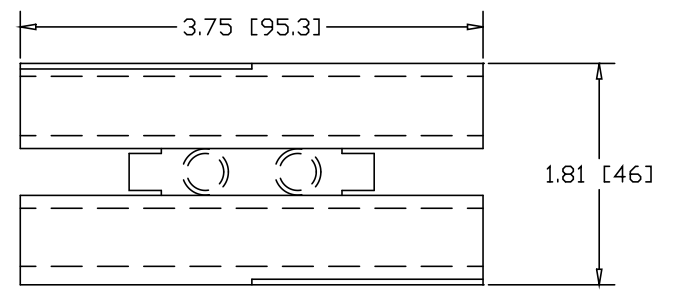
REVISIONS			
REV	DESCRIPTION	DATE	APPROVED



2" SCHEDULE 80 PIPE
(2.38 DIA X .218 WALL)




3/8-16 SOCKET HEAD
SET-SCREW X 1-5/8" LONG



DRILL Ø.406 HOLE
.38" IN FROM END
OF EACH PIPE

INCHES [MILLIMETERS]

ALTERNATE MATERIAL	PART NO.
12 GA. STEEL HOT DIP GALVANIZED	G3370
12 GA. STEEL ZINC PLATED	PL3370
.090 (3003) ALUMINUM ASTM B209	3363H

PART NAME		2" SCH80 PIPE DOUBLE-LOCK SPLICE-LOCK		
MATERIAL		12 GA. HRP&D STEEL ASTM A569		
DATE	9/20/01		THE WAGNER COMPANIES R & B WAGNER, INC. AND J. G. BRAUN CO.	
DRAWN BY	JAH			
FINISH	MILL	SIZE	WEIGHT	PART NUMBER
		A	.56 LBS	3370
				REV