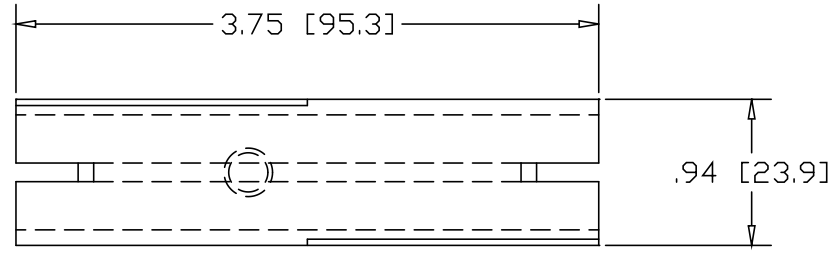
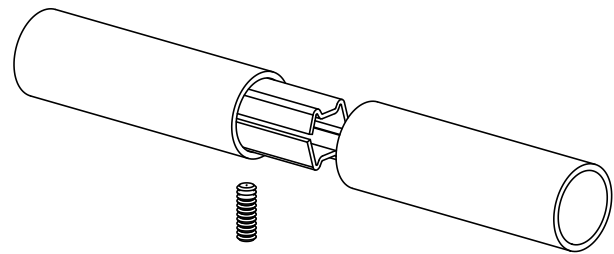
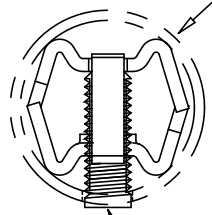


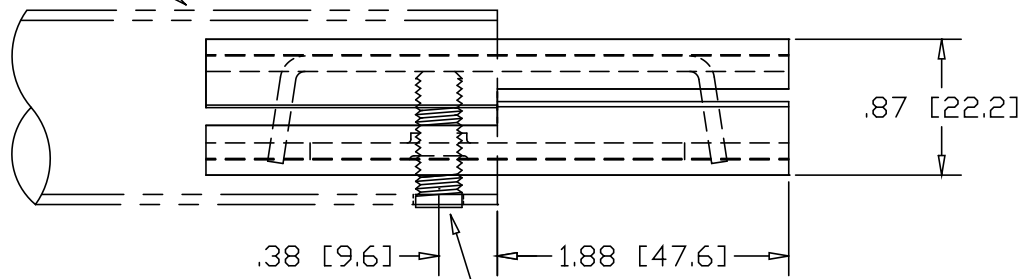
REVISIONS			
REV	DESCRIPTION	DATE	APPROVED



1.25" OD .065W TUBE




5/16-18 SOCKET HEAD SET-SCREW



DRILL ϕ .34[8.6] HOLE
.38[9.6] IN FROM END
FOR SET-SCREW

INCHES [MILLIMETERS]

ALTERNATE MATERIAL	PART NO.
12 GA. STEEL HOT DIP GALVANIZED	G3312
12 GA. STEEL ZINC PLATED	PL3312
.090 (3003) ALUMINUM ASTM B209	3331
.090 (304) STAINLESS STEEL ASTM A240	3332

PART NAME		1.25" OD .065W TUBE SINGLE-LOCK SPLICE-LOCK					
MATERIAL		12 GA. HRP&D STEEL ASTM A569					
DATE	9/14/01	 THE WAGNER COMPANIES R & B WAGNER, INC. AND J. G. BRAUN CO.					
DRAWN BY	JAH						
FINISH	MILL						
SIZE	A	WEIGHT	.26 LBS	PART NUMBER	3312	REV	