

2

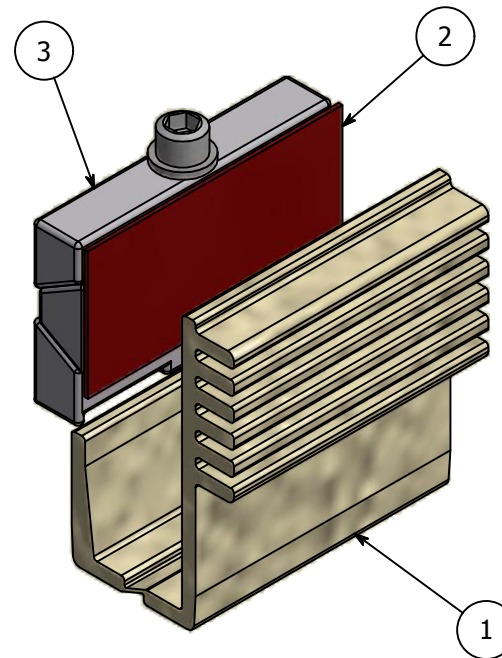
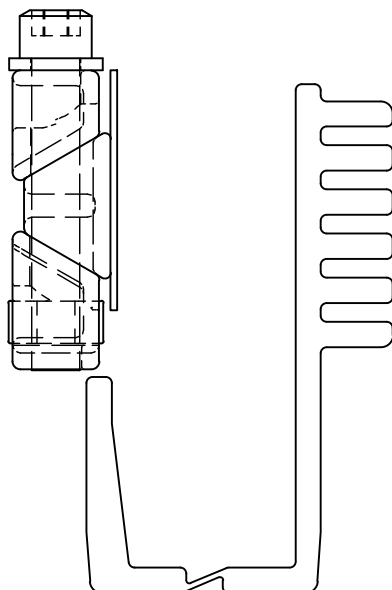
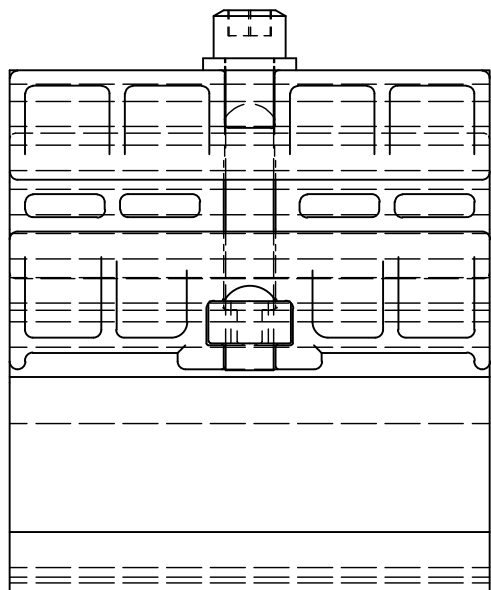


1

PARTS LIST

ITEM	QTY	PART NUMBER	DESCRIPTION
1	1	PGISO21	Cream Isolator, Plastic, Used with Panel Grip, 21.5mm Glass
2	1	PGISO.035	Red Pad, Used with Panel Grip, 21.5mm Glass
3	1	N/A	Panel Grip Assembly

B



B

A

A

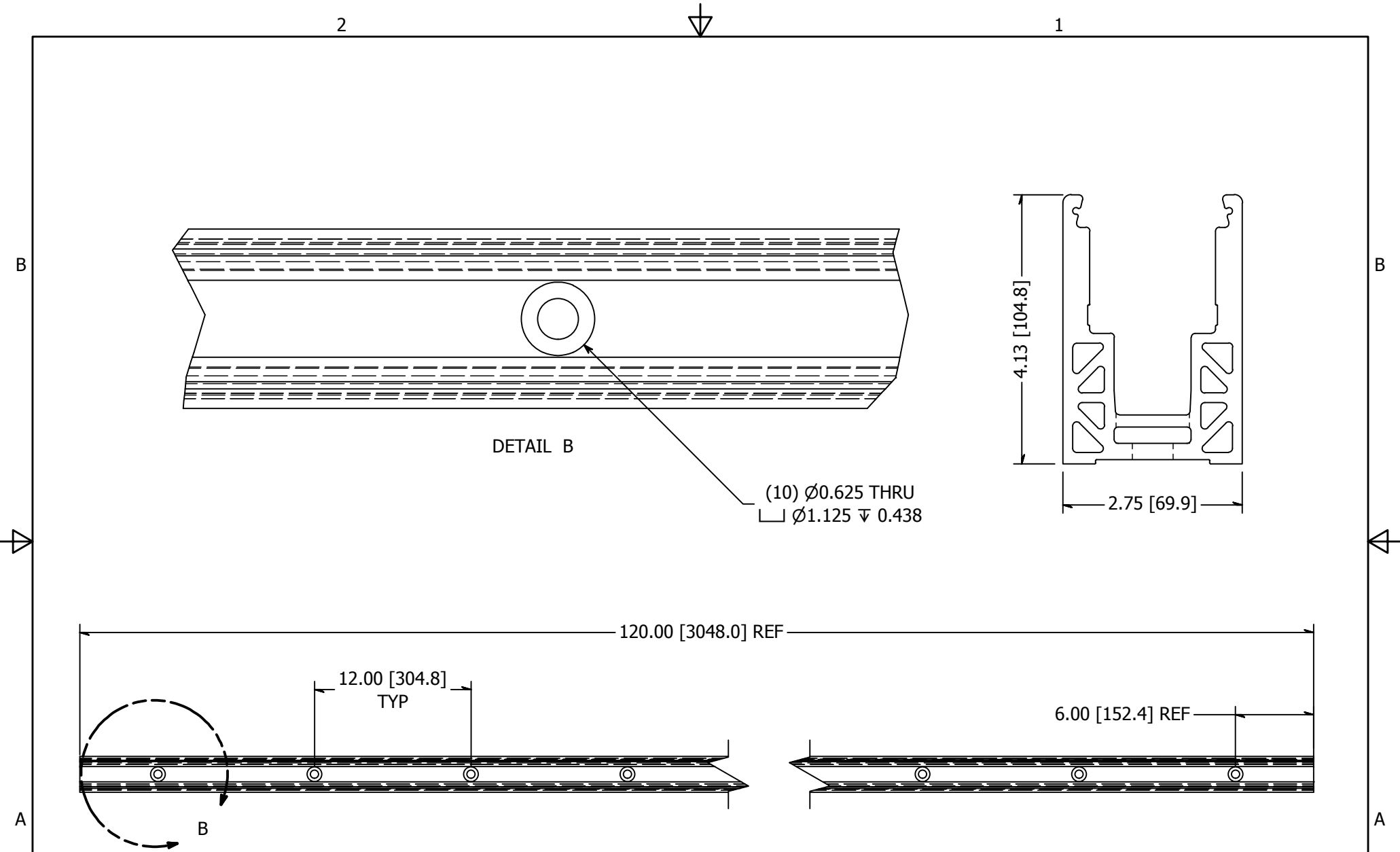
TOLERANCE X.X..... = ± .060 X.XX..... = ± .030 X.XXX..... = ± .010 XX°..... = ± 1° UNLESS OTHERWISE NOTED	CUT LENGTH:	FINISH:	DESCRIPTION: PanelGrip 2 for 21.5mm Glass, Dry Mount Mechanism, w/ Cream Isolator and Red Pad	
	DEVELOPED LENGTH:	WEIGHT:	DATE:	REV:
	TOOL NUMBER:		DRAWN BY:	1
			PART NUMBER:	

2



1





TOLERANCE X.X..... = ± .060 X.XX..... = ± .030 X.XXX..... = ± .010 XX°..... = ± 1° UNLESS OTHERWISE NOTED	CUT LENGTH:	FINISH:	DESCRIPTION: Shoe Moulding, AL, PanelGrip, 2-3/4 In Wide, 4-1/8 In High, Counterbored Holes	
		MILL	MATERIAL: Aluminum	MATERIAL DESC: Extruded Aluminum 6005-T5
	DEVELOPED LENGTH:	WEIGHT:	DATE: 1/23/2015	REV: -
		48.80 lbmass	DRAWN BY: K. Turdo	
TOOL NUMBER:			PART NUMBER: GR2457HCB-10	



2

1