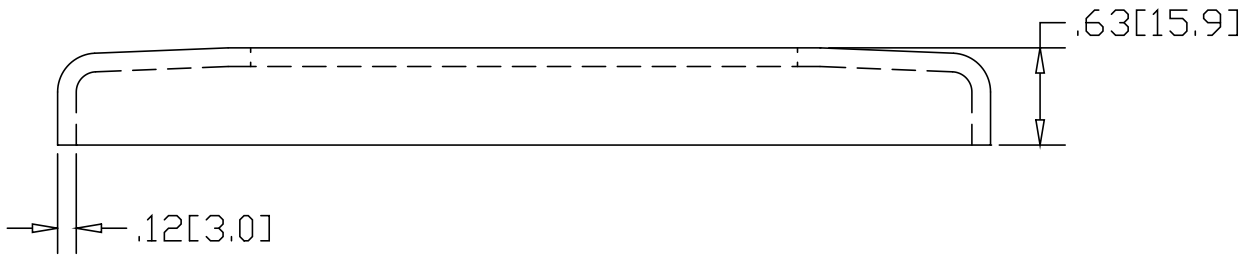
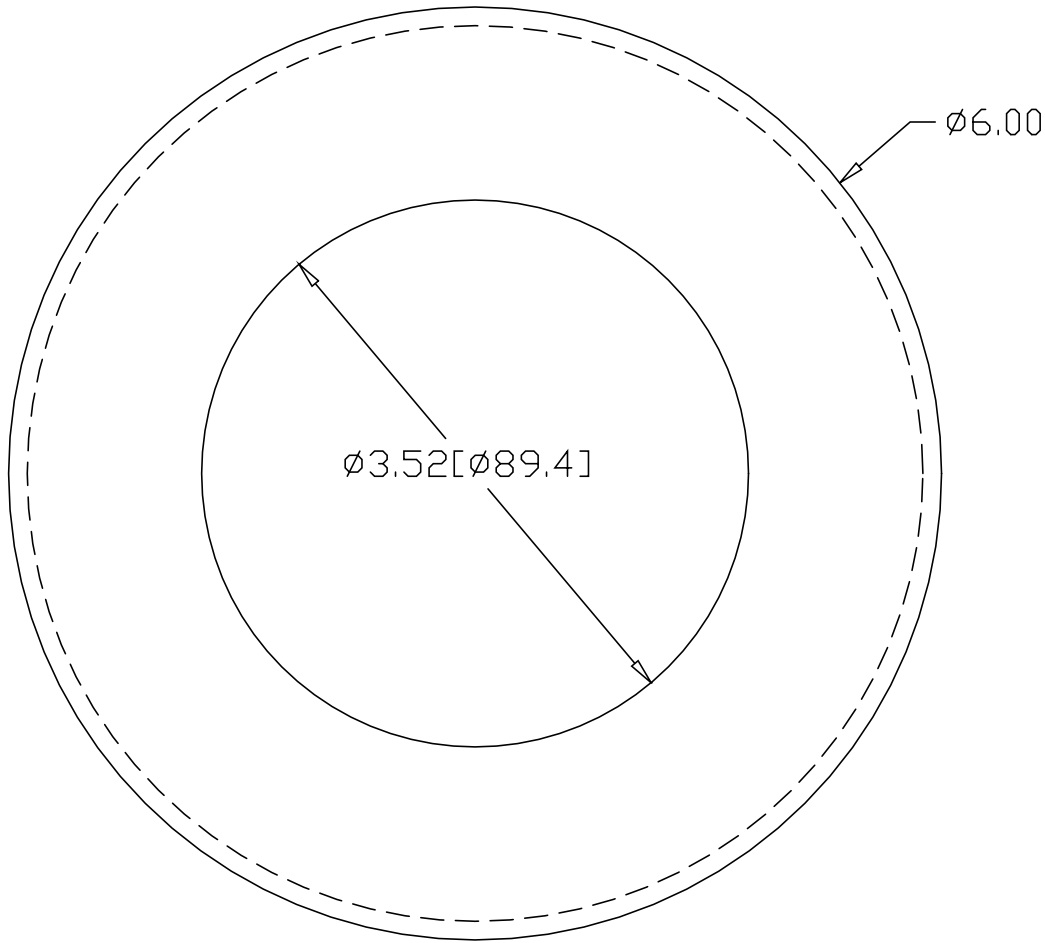



REV
SH
2546
DWG NO

| REVISIONS | | | |
|-----------|-------------|------|----------|
| REV | DESCRIPTION | DATE | APPROVED |



INCHES [MILLIMETERS]

| ALTERNATE MATERIAL | PART NUMBER |
|----------------------------------|-------------|
| .125 (3003) ALUMINUM ASTM B209 | 2586 |
| 11 GA. STAINLESS STEEL ASTM A240 | 2626 |
| .125 (280) MUNTZ METAL | BZ2546 |

| | | | |
|--|---|----------------|------------------|
| PART NAME 3" PIPE (3.50"OD) HEAVY FLUSH BASE FLANGE, PLAIN | | | |
| MATERIAL 11 GA. HRP&D STEEL ASTM A569 | | | |
| DATE 5/20/98 |  R & B WAGNER, INC. | | |
| DRAWN BY RJF | | | |
| FINISH MILL | SIZE A | WEIGHT 1.0 LBS | PART NUMBER 2546 |
| | | | REV |