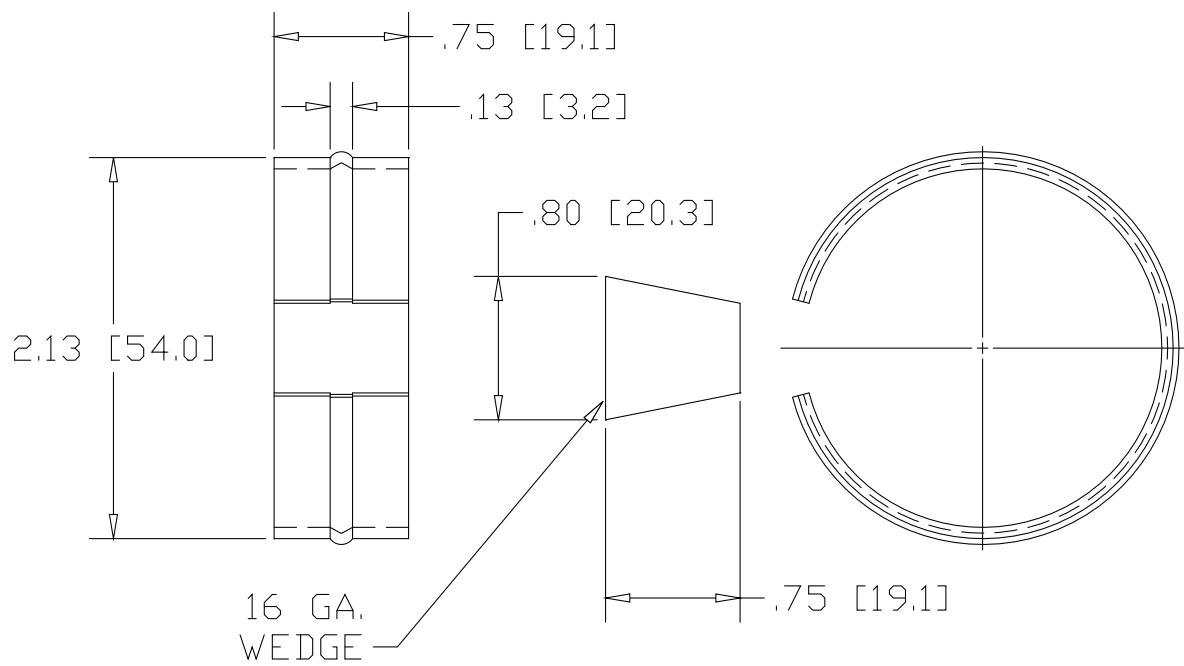
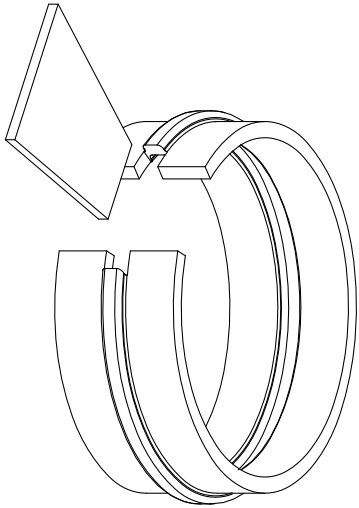



REV  
SH  
1043T  
DWG NO

| REVISIONS |             |      |          |
|-----------|-------------|------|----------|
| REV       | DESCRIPTION | DATE | APPROVED |



INCHES [MILLIMETERS]

| ALTERNATE MATERIAL                    | PART NUMBER |
|---------------------------------------|-------------|
| .063 (3003) ALUMINUM ASTM B209        | 1044T       |
| .0595 (304) STAINLESS STEEL ASTM A240 | 1045T       |

|  |          |   |         |
|--|----------|---|---------|
| PART NAME 2.50" OD .120W TUBE WEDGE-LOCK WELDING CONNECTOR |          |   |         |
| MATERIAL 16 GA. (.063) HRP&D STEEL ASTM A569               |          |   |         |
| DATE   | 10/10/01 |  <b>THE WAGNER COMPANIES</b><br>R & B WAGNER, INC. AND J. G. BRAUN CO. |         |
| DRAWN BY   | JAH      |   |         |
| FINISH   | MILL     |   |         |
| SIZE   | A        | WEIGHT  | .08 LBS |
|  |          | PART NUMBER   | 1043T   |
|  |          |   | REV     |