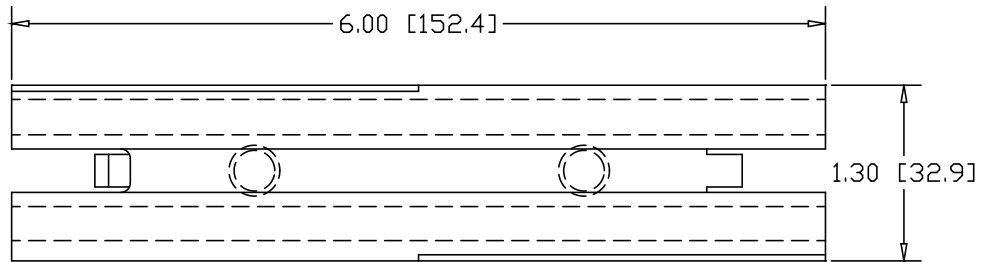
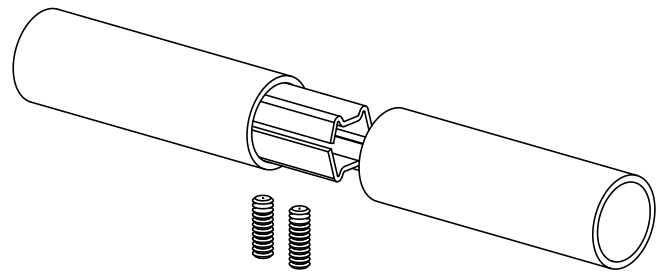
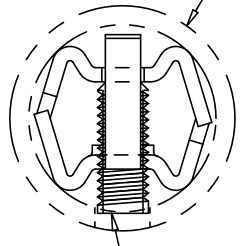


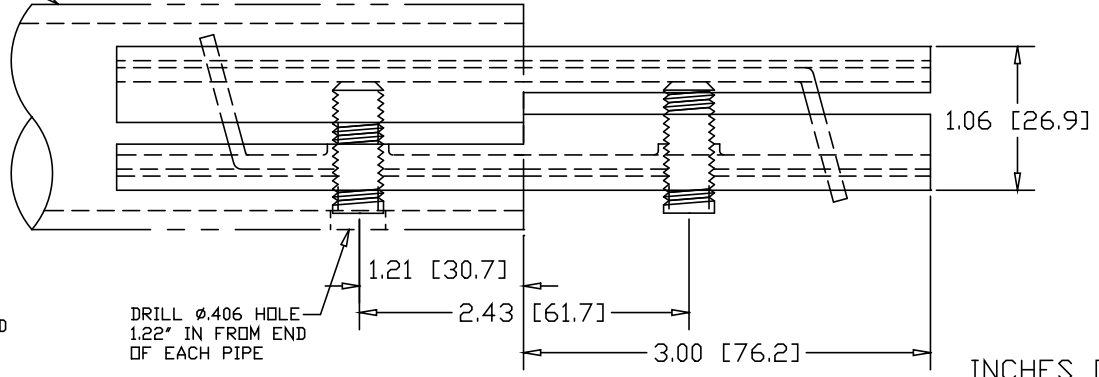
| REVISIONS | | | |
|-----------|-------------|------|----------|
| REV | DESCRIPTION | DATE | APPROVED |



1-1/4" SCHEDULE 40 PIPE
(1.66 O.D. X .140 WALL)




3/8-16 SOCKET HEAD
SET-SCREW X 1" LG



DRILL ϕ .406 HOLE
1.22" IN FROM END
OF EACH PIPE

INCHES [MILLIMETERS]

| ALTERNATE MATERIAL | PART NO. |
|--------------------------------------|----------|
| 12 GA. STEEL HOT DIP GALVANIZED | G3356 |
| 12 GA. STEEL ZINC PLATED | PL3356 |
| .090 (3003) ALUMINUM ASTM B209 | 3372 |
| .090 (304) STAINLESS STEEL ASTM A240 | 3389 |

| | | | | |
|-----------|---------|---|---------|-------------|
| PART NAME | | 1-1/4" SCH 40 PIPE DOUBLE-LOCK SPLICE-LOCK 6" LONG | | |
| MATERIAL | | 12 GA. HRP&D STEEL ASTM A569 | | |
| DATE | 3/22/93 |  R & B WAGNER, INC. | | |
| DRAWN BY | RJF | | | |
| FINISH | MILL | SIZE | WEIGHT | PART NUMBER |
| | | A | .75 LBS | 3356 |
| | | | | REV |