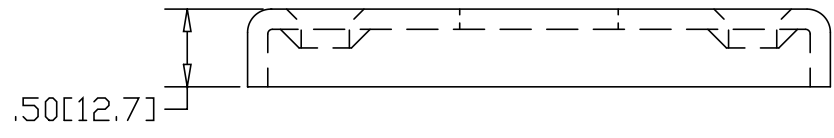
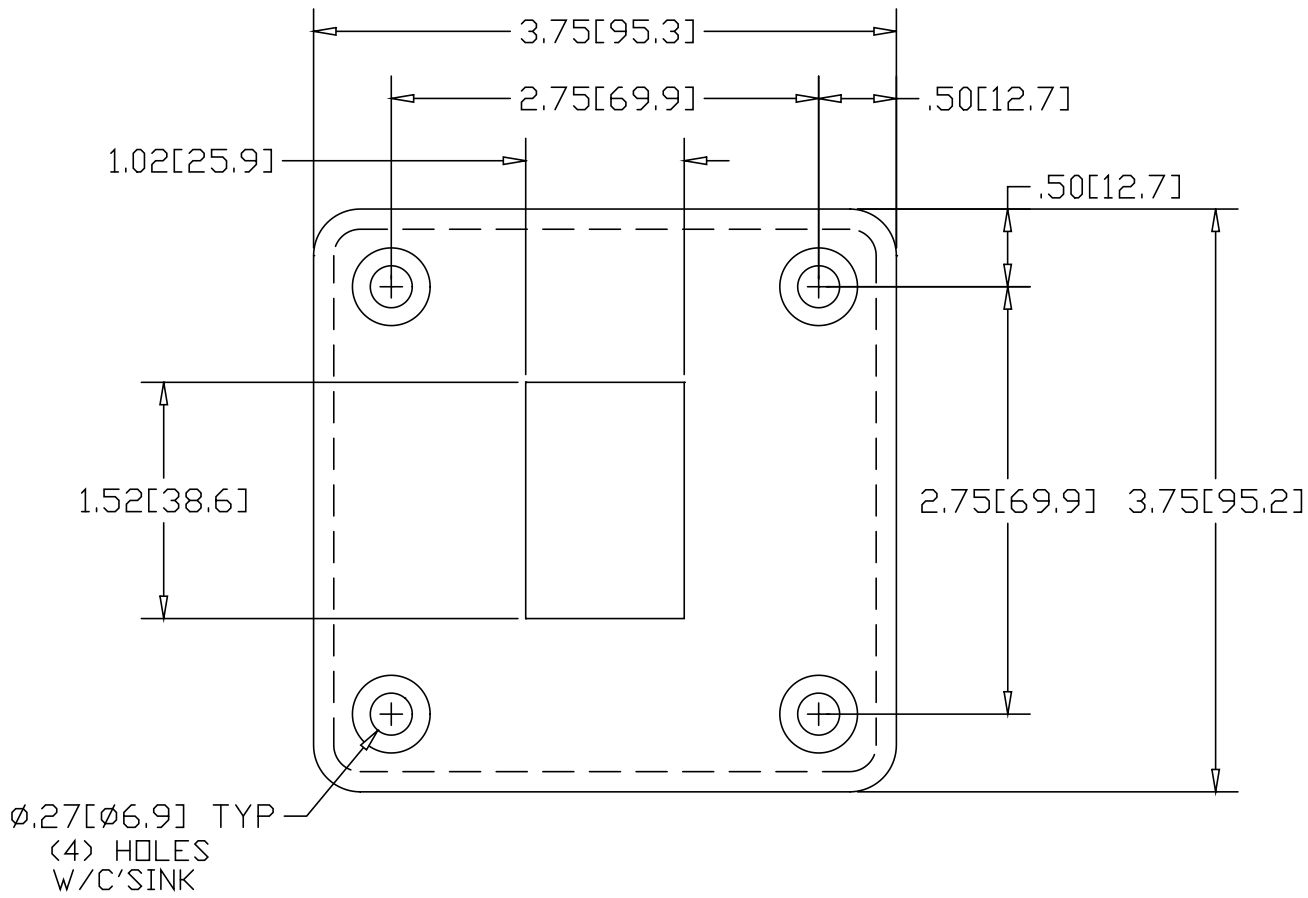



REV
SH
8751
DWG NO

| REVISIONS | | | |
|-----------|-------------|------|----------|
| REV | DESCRIPTION | DATE | APPROVED |



*USE WITH ANCHOR PLATE
 #8727 IN STEEL
 #8797 IN ALUMINUM
 #8867 IN STAINLESS

INCHES [MILLIMETERS]

| ALTERNATE MATERIAL | | PART NUMBER | | | | | |
|---|---------|---|---------|-------------|------|-----|--|
| .125 (3003) ALUMINUM ASTM B-209 | | 8821 | | | | | |
| 10 GA. (304) STAINLESS STEEL ASTM A240 | | 8891 | | | | | |
| PART NAME 1.50 X 1" RECT. TUBE HFB FLANGE W/(4) HOLES | | | | | | | |
| MATERIAL 10 GA. HRP&D STEEL ASTM A-569 | | | | | | | |
| DATE | 6/20/95 |  R & B WAGNER, INC. | | | | | |
| DRAWN BY | RJF | | | | | | |
| FINISH | MILL | | | | | | |
| SIZE | A | WEIGHT | .56 LBS | PART NUMBER | 8751 | REV | |